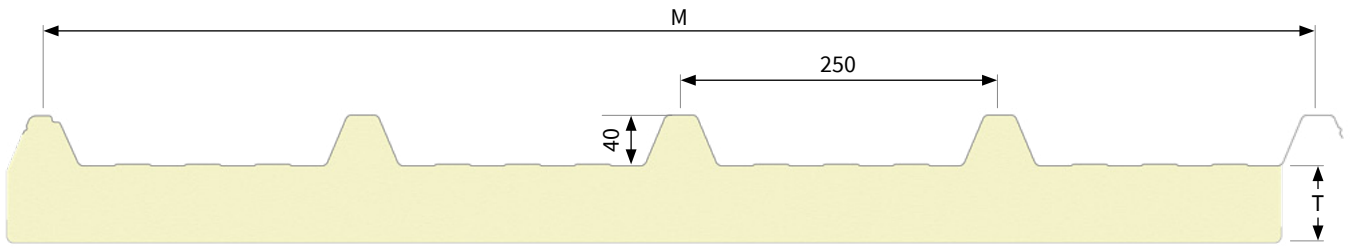


# Isodeck



## Product Description

- Sandwich panel for roofs with a minimum slope of 7%.
- Can also be used for flat roofs\*
- Corrugated profile H 40mm
- Single skin metal faced panel with single metal facing
- Secondary facing in bituminous felt
- Polyurethane foam insulation

## Useful width - "M"

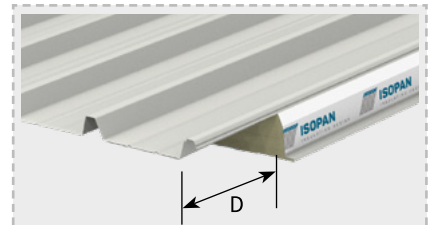
1000 mm

## Available length

On request

## Insulation

Polyurethane foam (PU)  
Polyisocyanurate foam (PIR)  
Nominal density 40 kg/m<sup>3</sup>

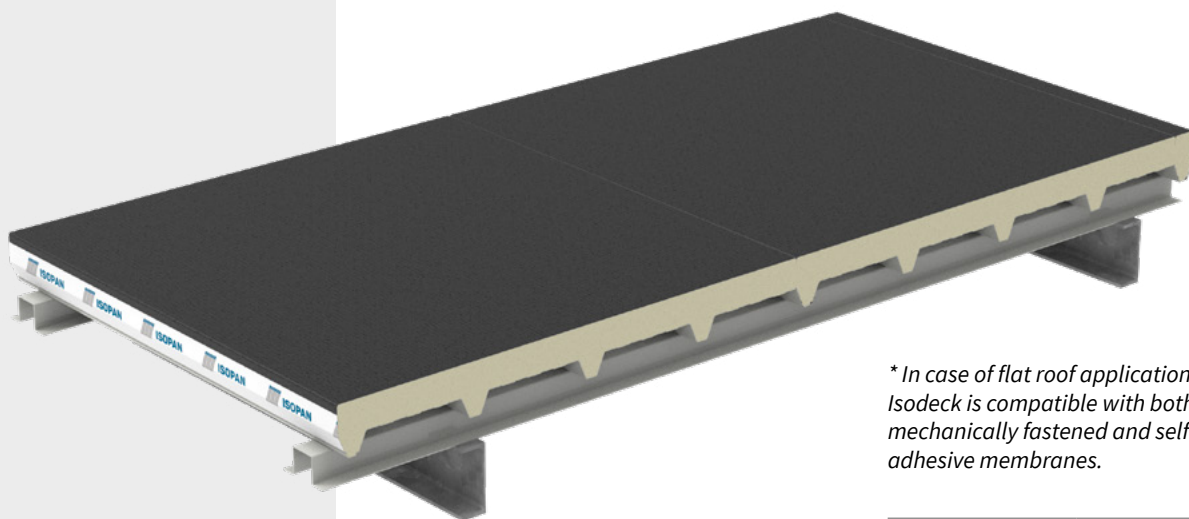


## Overlapping

D= 50; 100; 150; 200 mm / on request  
Other sizes on request

## Metal sheets

External metal sheet: Pre-painted sheet  
Internal facing: Bituminous felt cardboard



*\* In case of flat roof applications, Isodeck is compatible with both mechanically fastened and self-adhesive membranes.*

BREEAM®

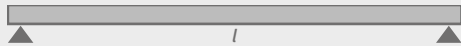


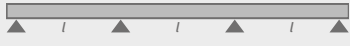
### Capacity tables

Steel sheets

\*Values with stress limitations.

Deflection limit 1/200 ℓ. The values shown in the capacity tables do not take into account the thermal load.

UNIFORMLY DISTRIBUTED LOAD [kg/m <sup>2</sup> ]	 NOMINAL SHEET THICKNESS [mm]				
	0,5	0,6	0,7	0,8	1,0
	Maximum Span "ℓ" [cm]				
80	220*	235	250	265	285
100	200*	220*	235	245	265
120	180*	200*	215*	230	250
140	165*	185*	200*	215*	235
160	155*	170*	185*	200*	225

UNIFORMLY DISTRIBUTED LOAD [kg/m <sup>2</sup> ]	 NOMINAL SHEET THICKNESS [mm]				
	0,5	0,6	0,7	0,8	1,0
	Maximum Span "ℓ" [cm]				
80	250*	270	285	295	320
100	200*	245*	260	275	295
120	200*	225*	240*	260	280
140	185*	205*	225*	240*	265
160	175*	195*	210*	225*	255

### Technical specifications

#### Available thickness 'T'

Thermal Transmittance 'U' according to EN 14509 - A.10. The weight considers panels with steel sheets, nominal thickness indicated in the table.

T [mm]	Thermal Transmittance - U		Weight - [Kg/m <sup>2</sup> ]		
	[W/m <sup>2</sup> K]	[kcal/m <sup>2</sup> h °C]	0,6 mm	0,7mm	0,8mm
30	0,71	0,61	7,4	8,5	9,3
40	0,54	0,47	7,7	8,8	9,8
50	0,44	0,38	8,2	9,2	10,2
60	0,37	0,32	8,6	9,6	10,6
80	0,28	0,24	9,4	10,4	11,4
100	0,22	0,19	10,2	11,2	12,2

### Instructions for use and dimensional tolerances

consult the Technical Manual, General Sales Conditions and Annexes available on the website.