

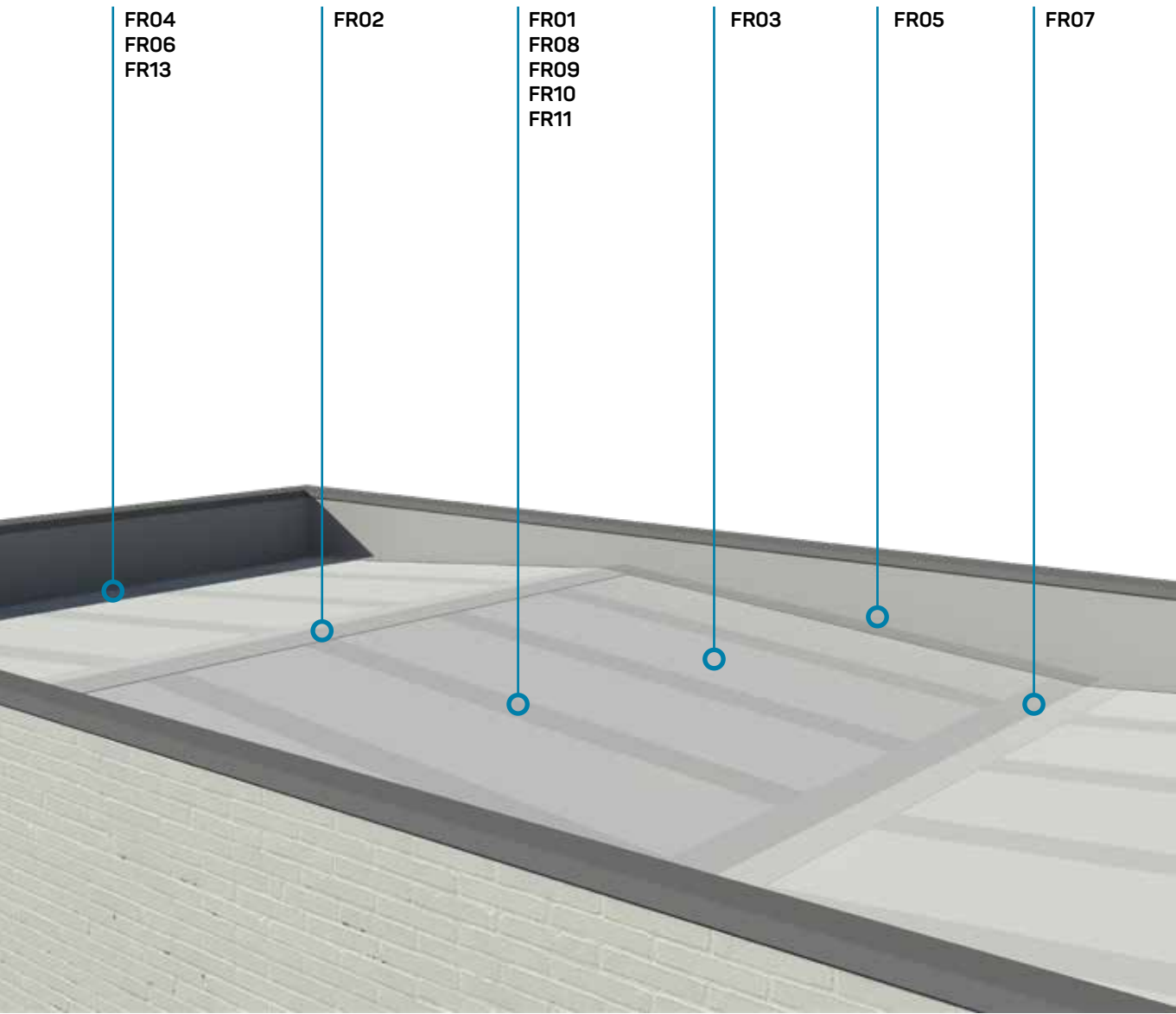
Technical Details and Assembly Drawings

FLAT ROOF DETAILS



Flat Roof

Table of contents



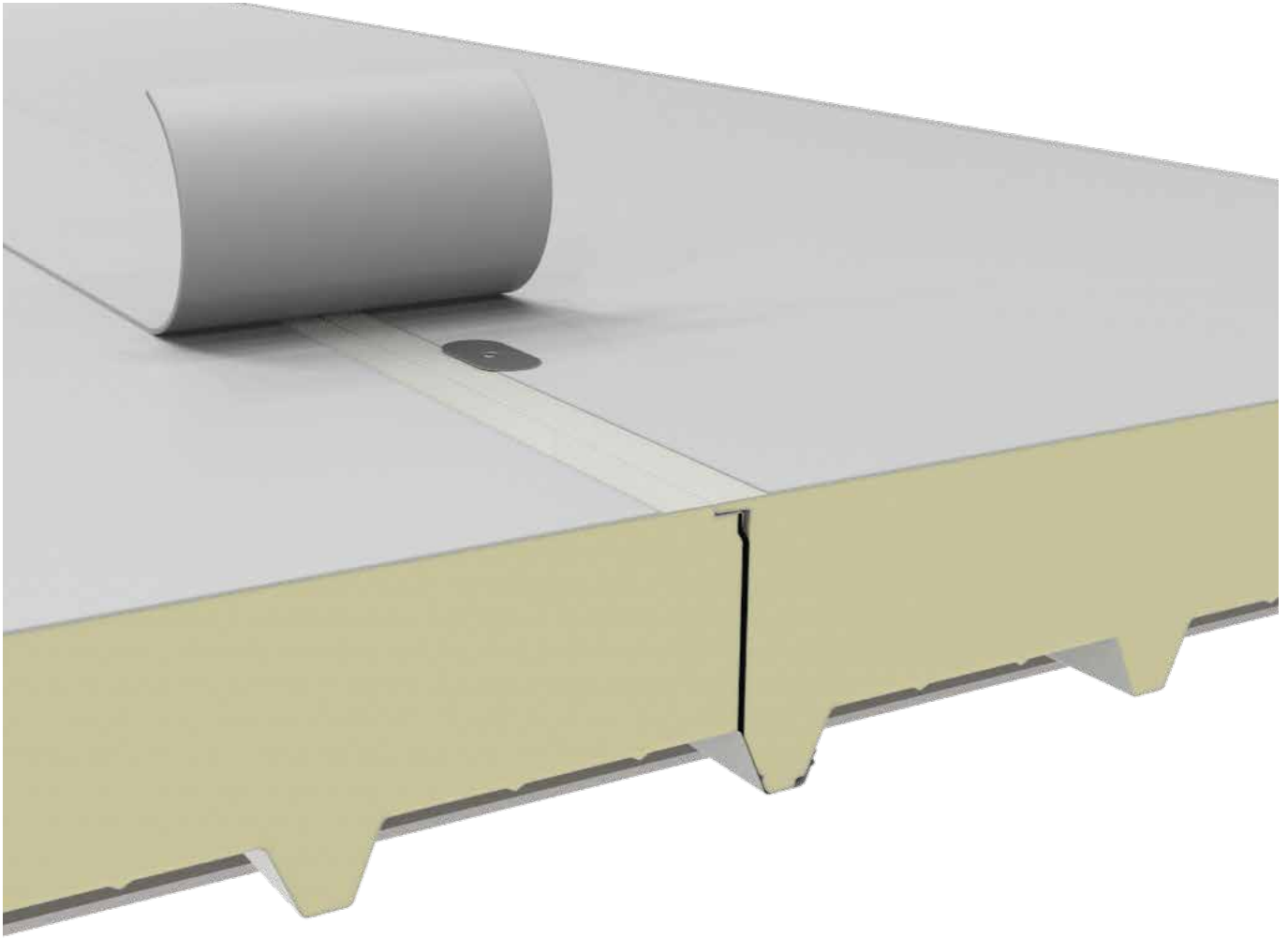
Flat Roof

Drawings Index

Code Drawings	Title	Page
FR01	Joint detail	3
FR02	Ridge connection - Type 1	5
FR03	Panel to panel head joint	7
FR04	Eave connection - Type 1	9
FR05	Parapet connection	11
FR06	Eave connection - Type 2 (Insulated eave)	13
FR07	Ridge connection - Type 2	15
FR08	Chimney Outlet	17
FR09	Isobar installation	19
FR10	Fall Arrest systems	21
FR11	Outlet for through structure	23
FR12	HVAC	
FR13	Open gutter	

FR01

Joint detail

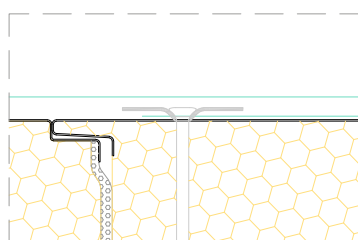
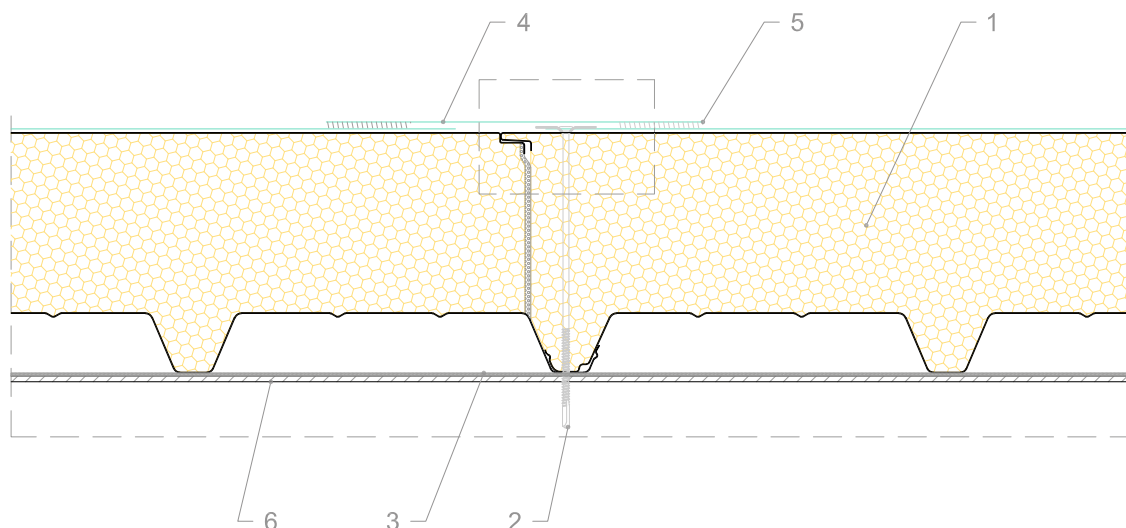


FR01

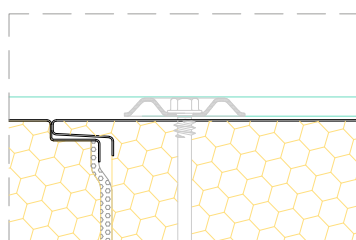
Joint detail



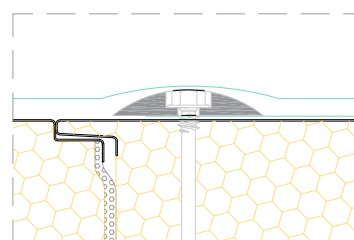
You can download the .dwg and .pdf files collection at isopan.com.



FASTENING DETAIL
Type 1
 $T_s \leq 2\text{mm}$



FASTENING DETAIL
Type 2
 $2\text{mm} < T_s \leq 6\text{mm}$



FASTENING DETAIL
Type 3
 $T_s > 6\text{mm}$

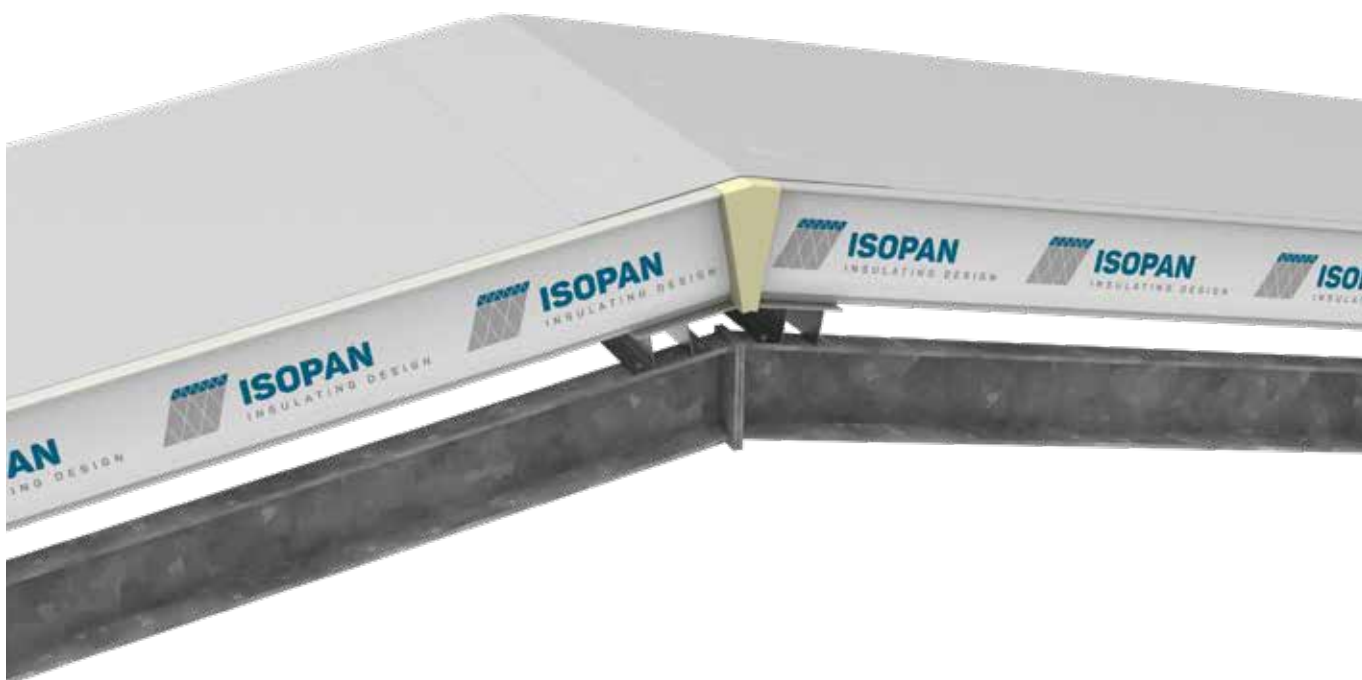
LEGEND

1. Isopan Flat Roof sandwich panel
2. Fixing system (screw with metal or plastic cap)
3. Thermo separating tape
4. Pontage synthetic layer
5. Air welding
6. Secondary structure

ATTENTION: the proposed solution does not constitute the project, and must be firstly assessed and evaluated by the designer and construction supervision. The designer is responsible for assessing the need to insert additional gasket and/or closing elements, even when not indicated in the drawing details. The property rights of this document belong to ISOPAN S.p.a. The contents can't be reproduced without prior written permission by the author. To choose the type of fastening, please refer to the screw type choice sheet; To choose the screw length, please refer to the data sheet for the correct screw length).

FR02

Ridge connection - Type 1

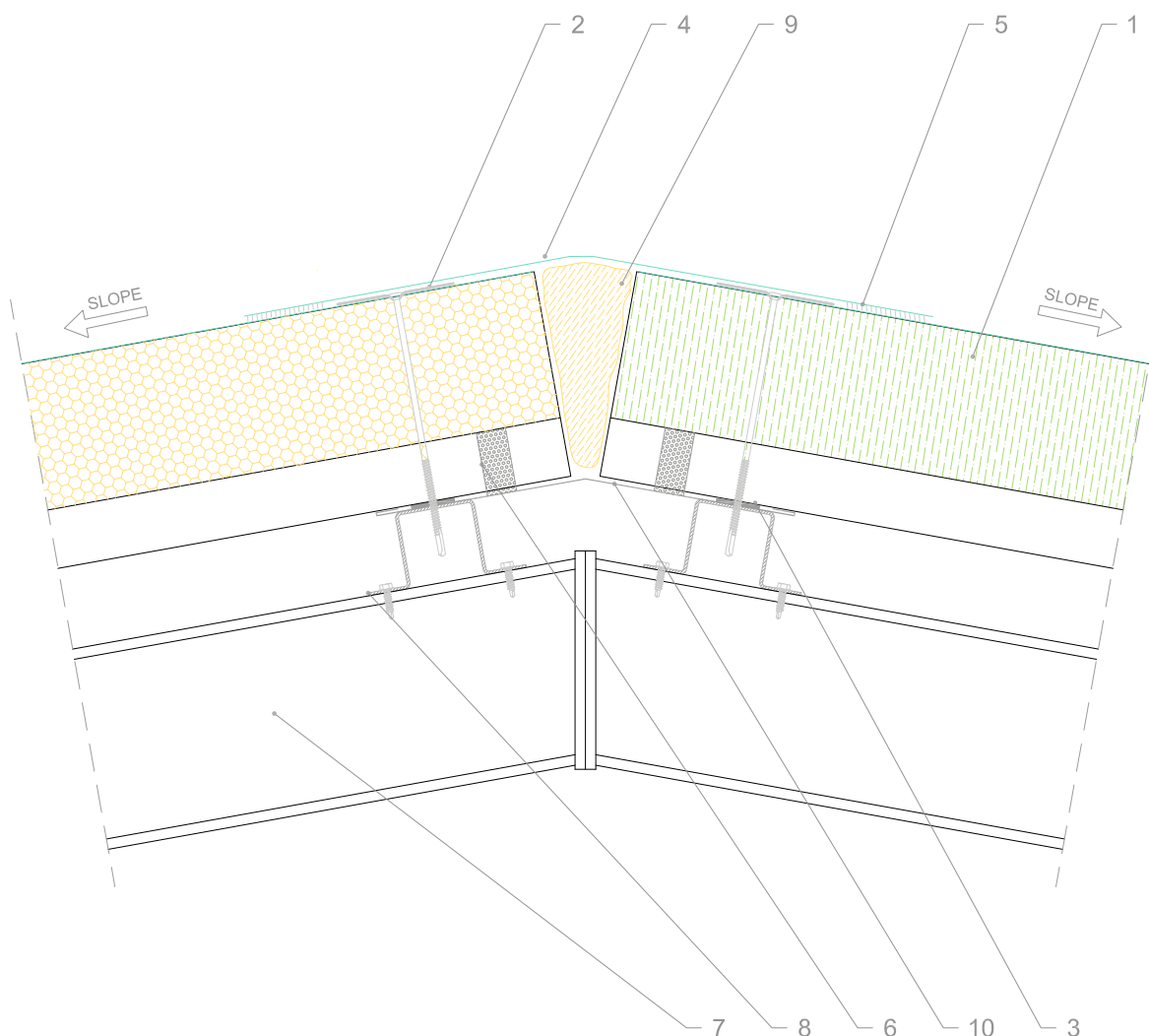


FR02

Ridge connection - Type 1



You can download the .dwg and .pdf files collection at isopan.com.



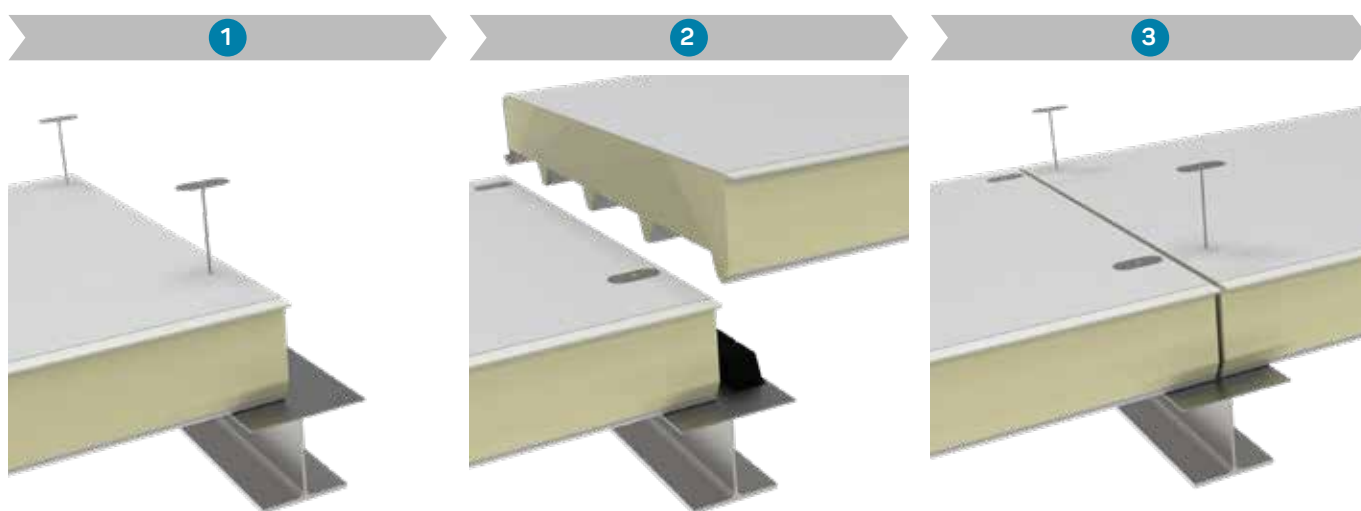
LEGEND

1. Isopan Flat Roof sandwich panel
2. Fixing system (screw with metal or plastic cap)
3. Thermo separating tape
4. Pontage synthetic layer
5. Air welding
6. Giuntoplast Gasket
7. Primary structure
8. Secondary structure
9. On site insulating material / Mineral wool
10. Pre-painted flashing

ATTENTION: the proposed solution does not constitute the project, and must be firstly assessed and evaluated by the designer and construction supervision. The designer is responsible for assessing the need to insert additional gasket and/or closing elements, even when not indicated in the drawing details. The property rights of this document belong to ISOPAN S.p.a. The contents can't be reproduced without prior written permission by the author. To choose the type of fastening, please refer to the screw type choice sheet; To choose the screw length, please refer to the data sheet for the correct screw length).

FR03

Panel to panel head joint

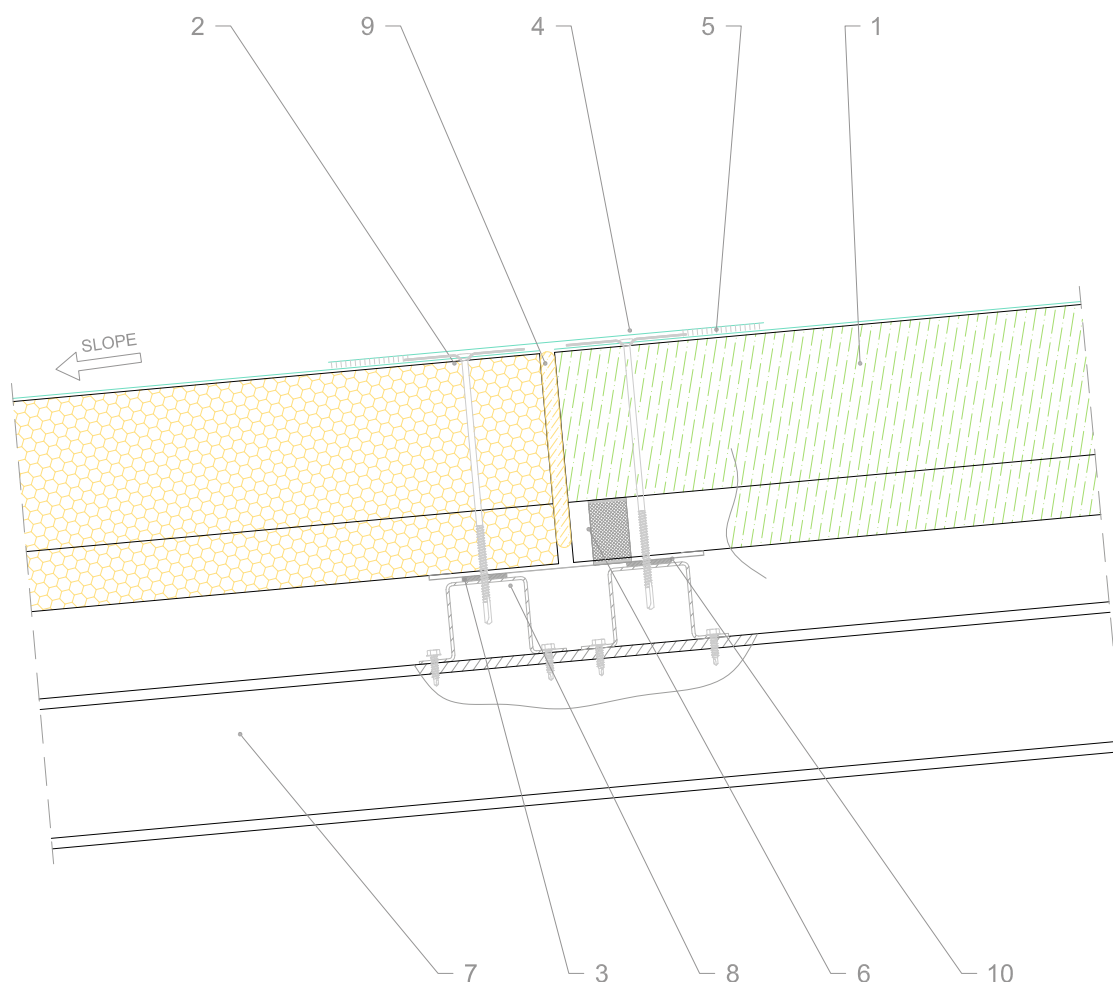


FR03

Panel to panel head joint



You can download the .dwg and .pdf files collection at isopan.com.



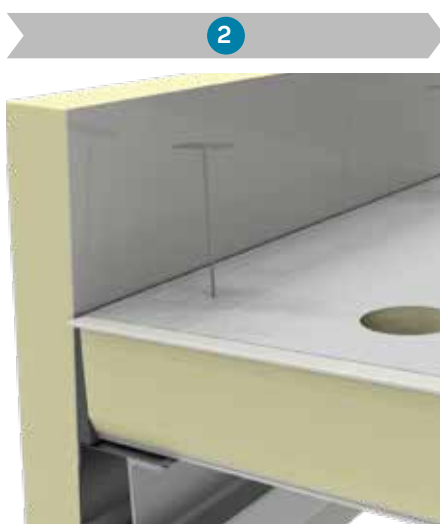
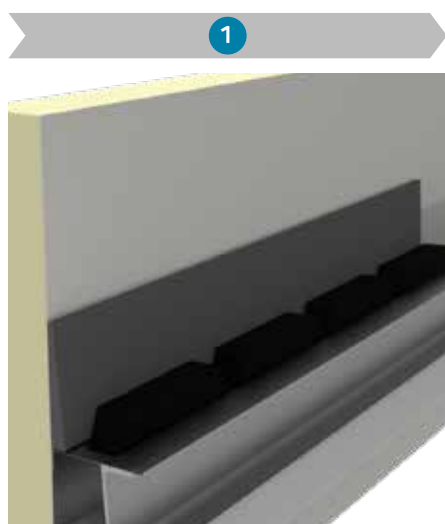
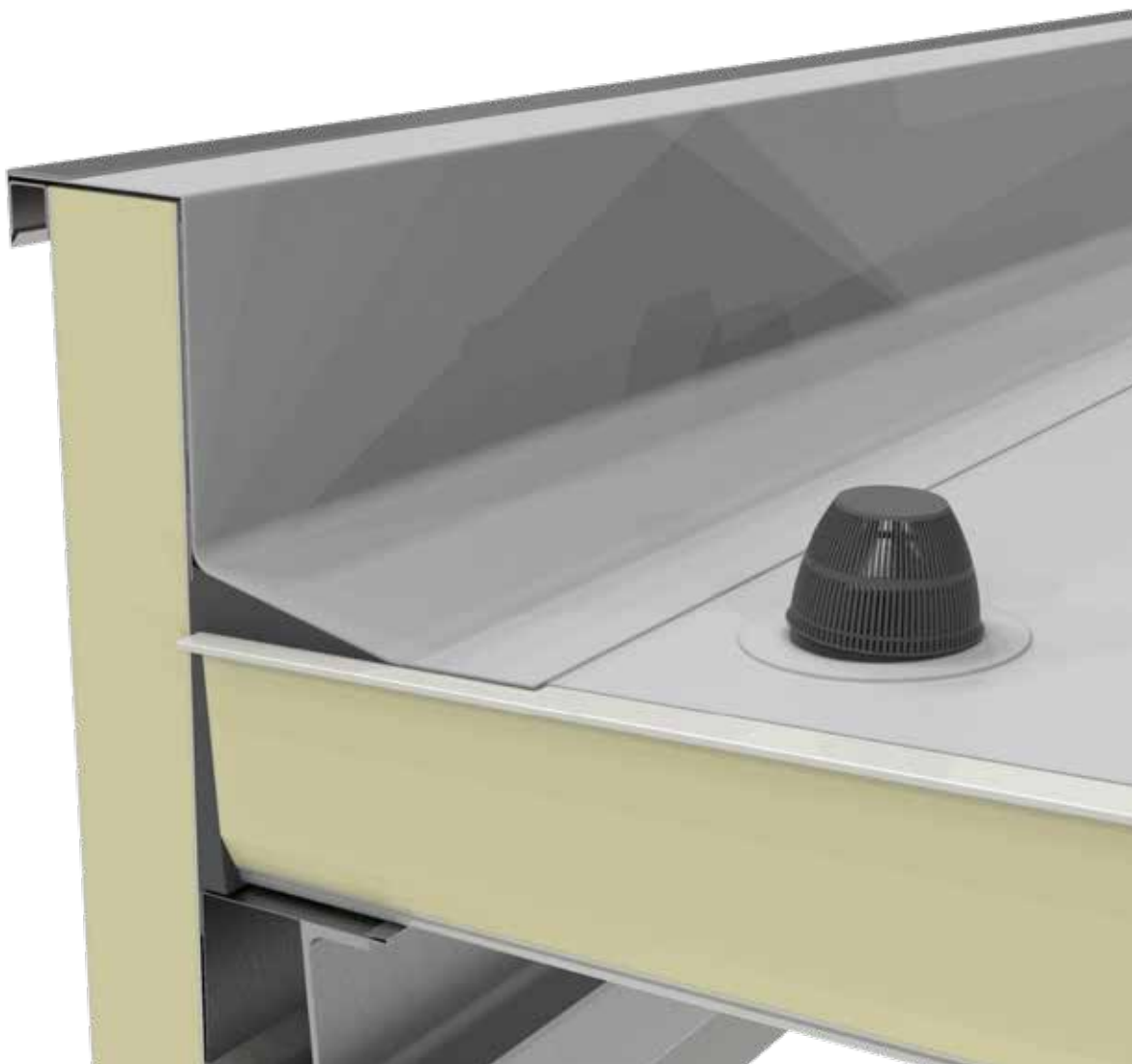
LEGEND

1. Isopan Flat Roof sandwich panel
2. Fixing system (screw with metal or plastic cap)
3. Thermo separating tape
4. Pontage synthetic layer
5. Air welding
6. Giuntoplast Gasket
7. Primary structure
8. Secondary structure
9. On site insulating material / Mineral wool
10. Pre-painted flashing

ATTENTION: the proposed solution does not constitute the project, and must be firstly assessed and evaluated by the designer and construction supervision. The designer is responsible for assessing the need to insert additional gasket and/or closing elements, even when not indicated in the drawing details. The property rights of this document belong to ISOPAN S.p.a.. The contents can't be reproduced without prior written permission by the author. To choose the type of fastening, please refer to the screw type choice sheet; To choose the screw length, please refer to the data sheet for the correct screw length).

FR04

Eave connection - Type 1

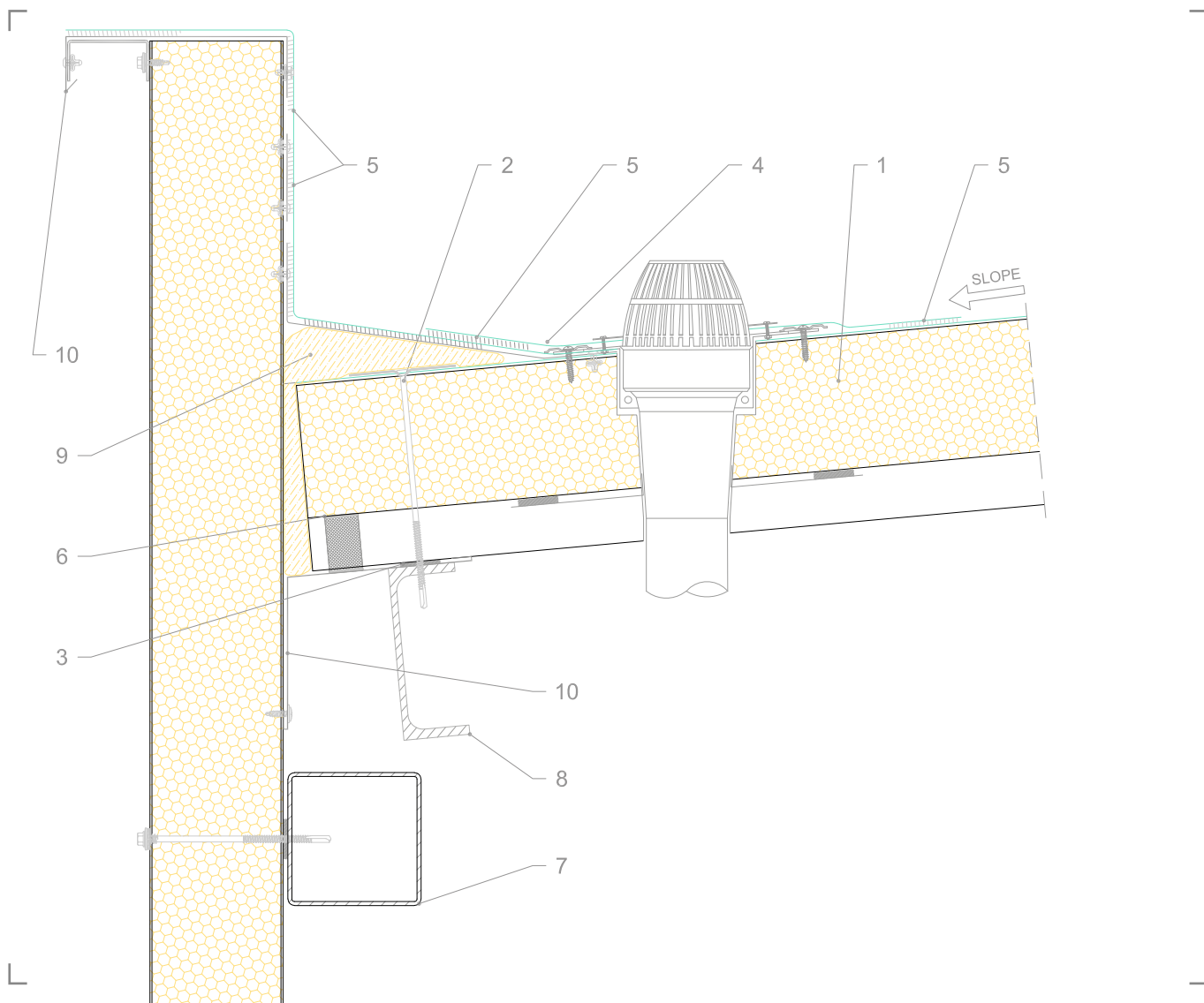


FR04

Eave connection - Type 1



You can download the .dwg and .pdf files collection at isopan.com.



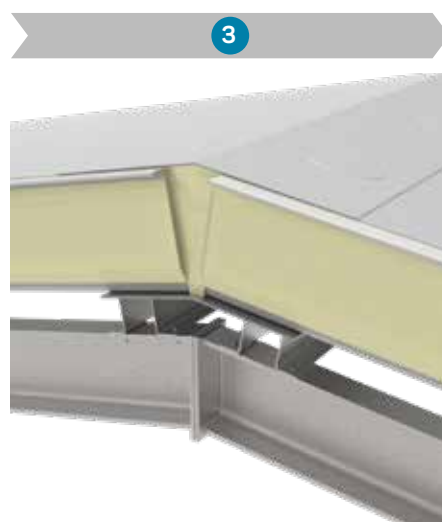
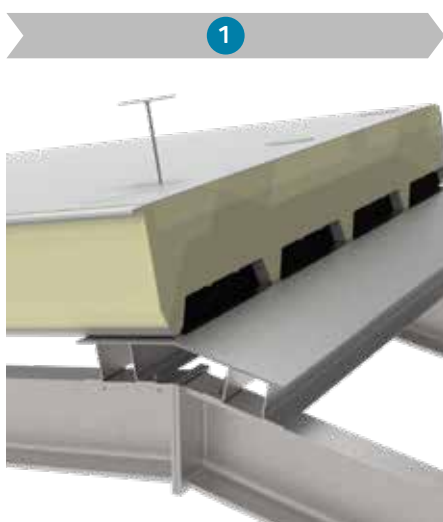
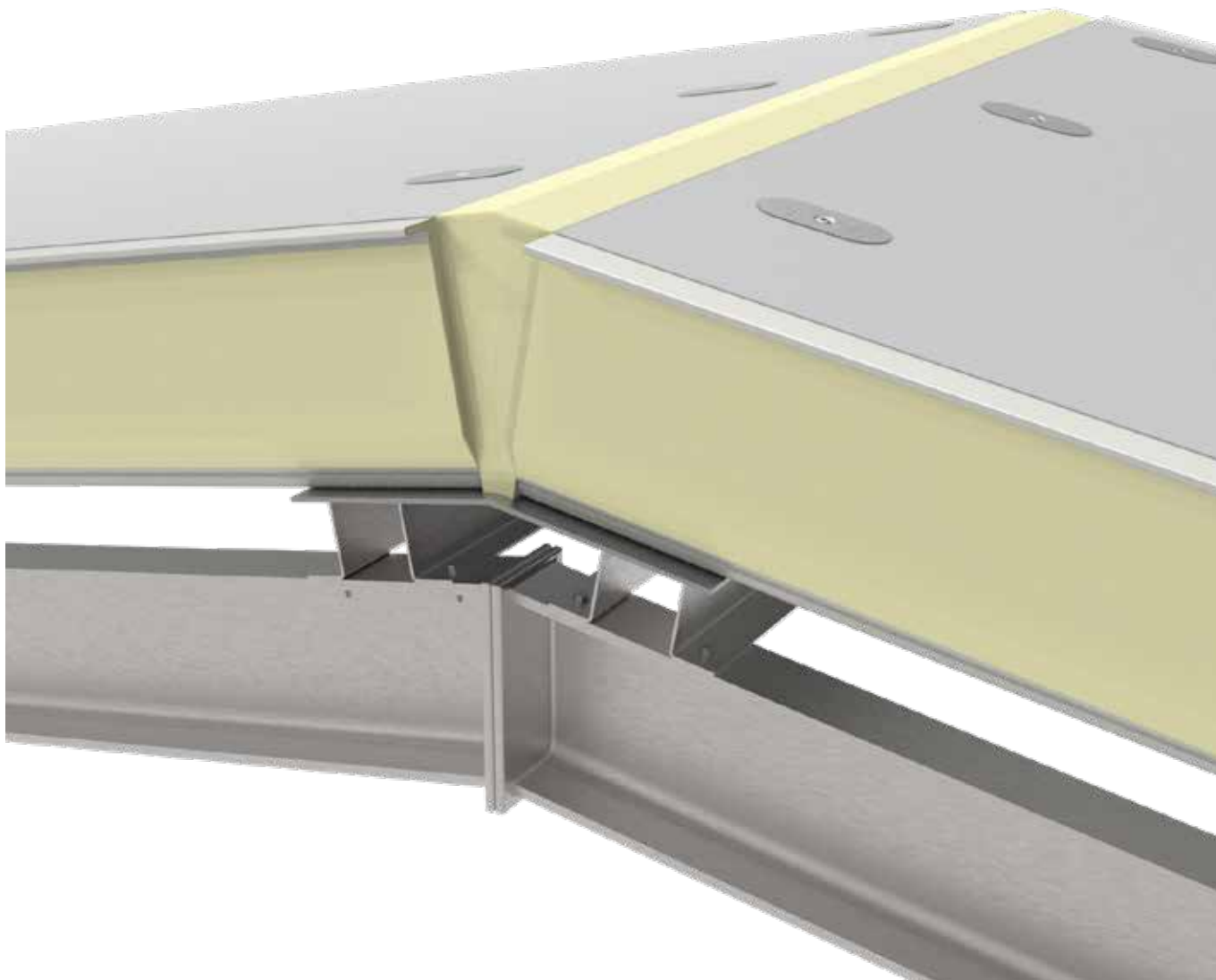
LEGEND

1. Isopan Flat Roof sandwich panel
2. Fixing system (screw with metal or plastic cap)
3. Thermo separating tape
4. Pontage synthetic layer
5. Air welding
6. Giuntoplast Gasket
7. Primary structure
8. Secondary structure
9. On site insulating material / Mineral wool
10. Pre-painted sheet

ATTENTION: the proposed solution does not constitute the project, and must be firstly assessed and evaluated by the designer and construction supervision. The designer is responsible for assessing the need to insert additional gasket and/or closing elements, even when not indicated in the drawing details. The property rights of this document belong to ISOPAN S.p.a. The contents can't be reproduced without prior written permission by the author. To choose the type of fastening, please refer to the screw type choice sheet; To choose the screw length, please refer to the data sheet for the correct screw length).

FR05

Parapet connection

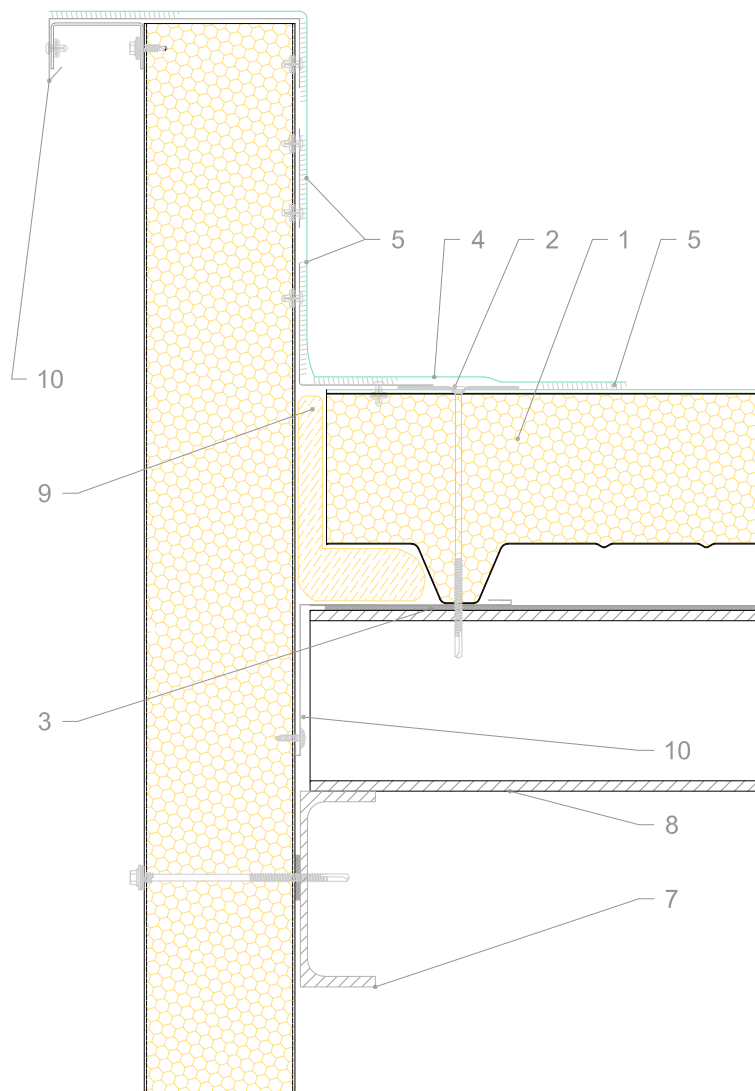


FR05

Parapet connection



You can download the .dwg and .pdf files collection at isopan.com.



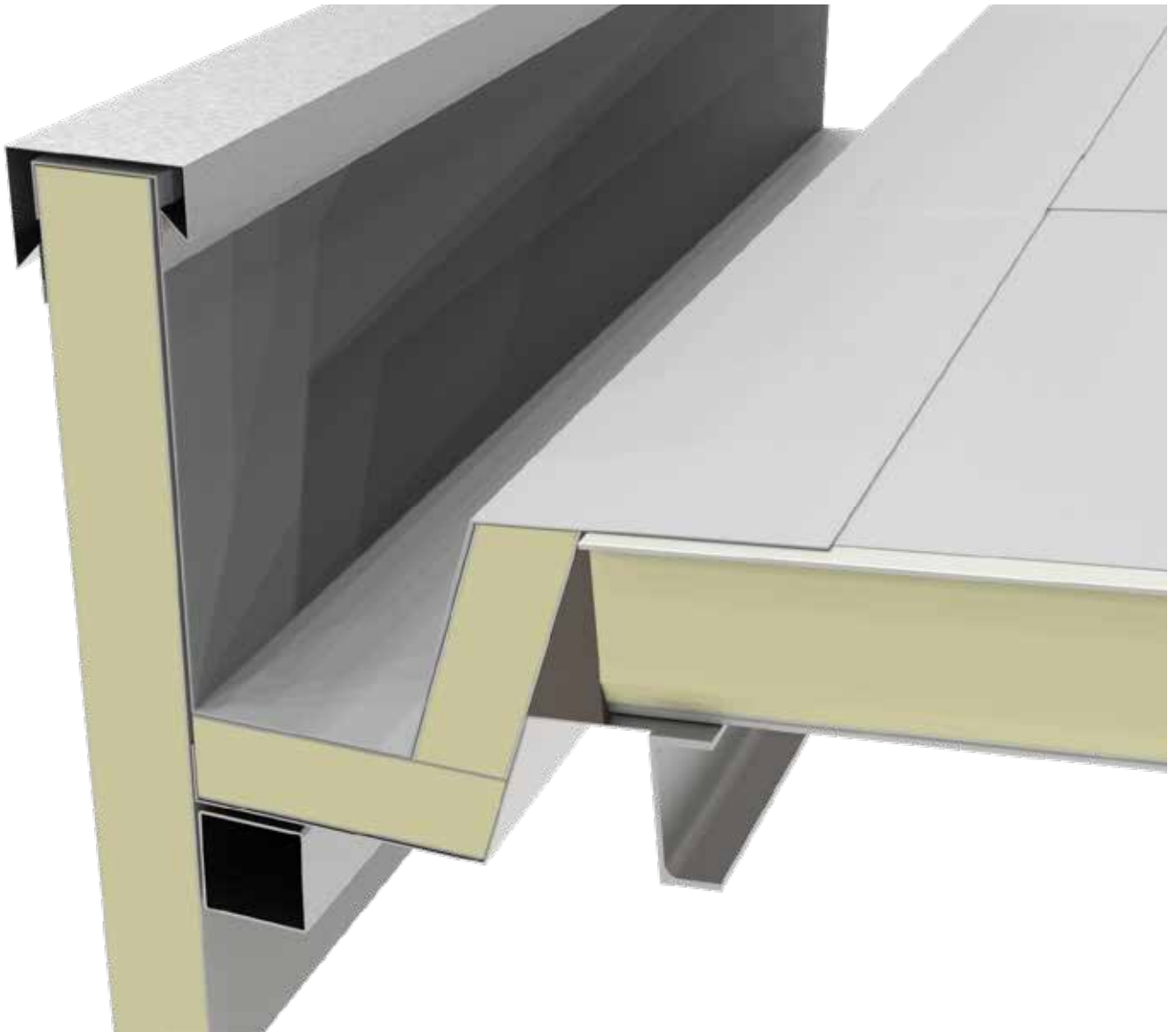
LEGEND

1. Isopan Flat Roof sandwich panel
2. Fixing system (screw with metal or plastic cap)
3. Thermo separating tape
4. Pontage synthetic layer
5. Air welding
6. Giuntoplast Gasket
7. Primary structure
8. Secondary structure
9. On site insulating material / Mineral wool
10. Prepainted sheet

ATTENTION: the proposed solution does not constitute the project, and must be firstly assessed and evaluated by the designer and construction supervision. The designer is responsible for assessing the need to insert additional gasket and/or closing elements, even when not indicated in the drawing details. The property rights of this document belong to ISOPAN S.p.a. The contents can't be reproduced without prior written permission by the author. To choose the type of fastening, please refer to the screw type choice sheet; To choose the screw length, please refer to the data sheet for the correct screw length).

FR06

Eave connection - Type 2 (Insulated eave)

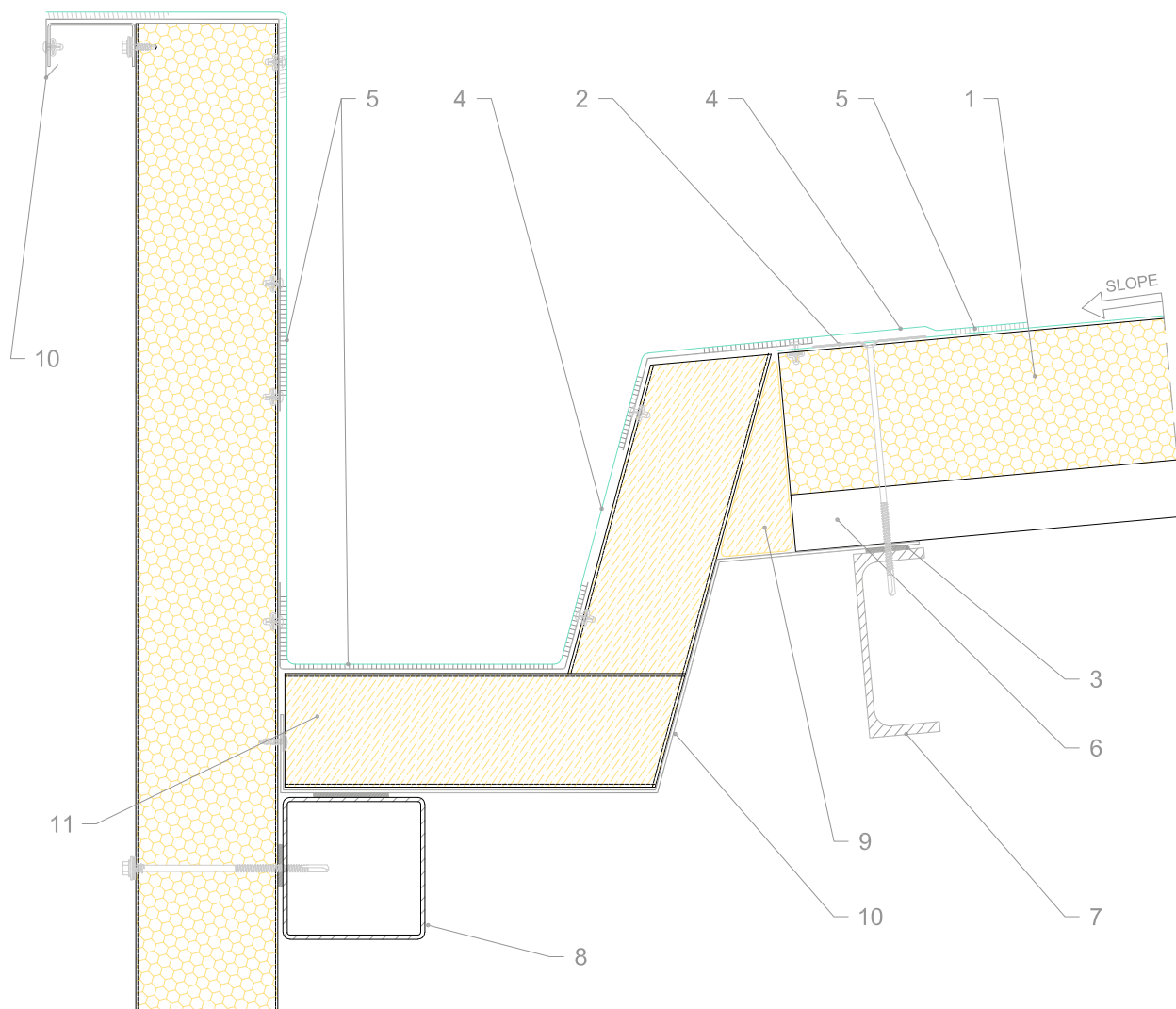


FR06

Eave connection - Type 2 (Insulated eave)



You can download the .dwg and .pdf files collection at isopan.com.



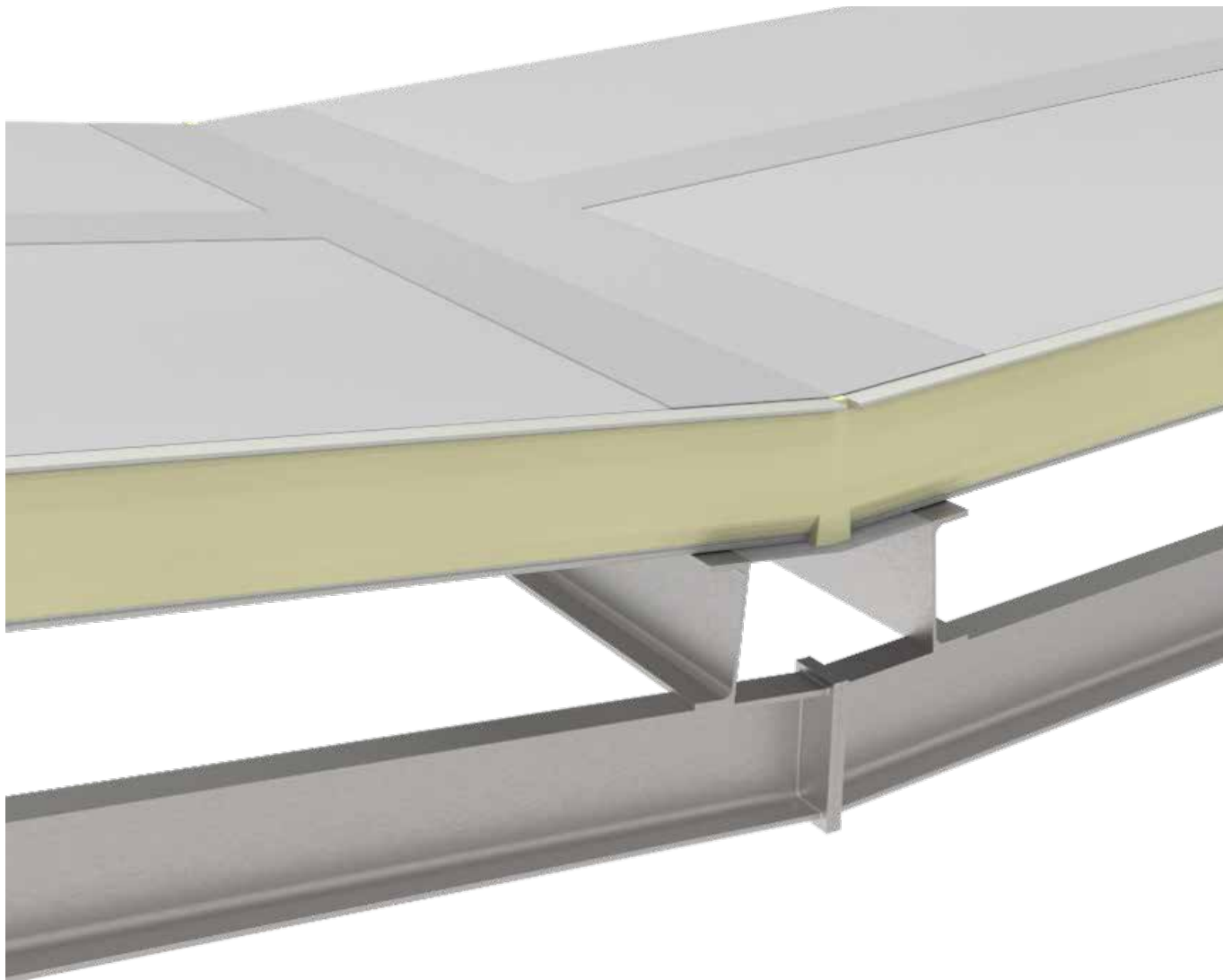
LEGEND

1. Isopan Flat Roof sandwich panel
2. Fixing system (screw with metal or plastic cap)
3. Thermo separating tape
4. Pontage synthetic layer
5. Air welding
6. Giuntoplast Gasket
7. Primary structure
8. Secondary structure
9. On site insulating material / Mineral wool
10. Prepainted sheet
11. On-site insulated gutter

ATTENTION: the proposed solution does not constitute the project, and must be firstly assessed and evaluated by the designer and construction supervision. The designer is responsible for assessing the need to insert additional gasket and/or closing elements, even when not indicated in the drawing details. The property rights of this document belong to ISOPAN S.p.a. The contents can't be reproduced without prior written permission by the author. To choose the type of fastening, please refer to the screw type choice sheet; To choose the screw length, please refer to the data sheet for the correct screw length).

FR07

Ridge connection - Type 2

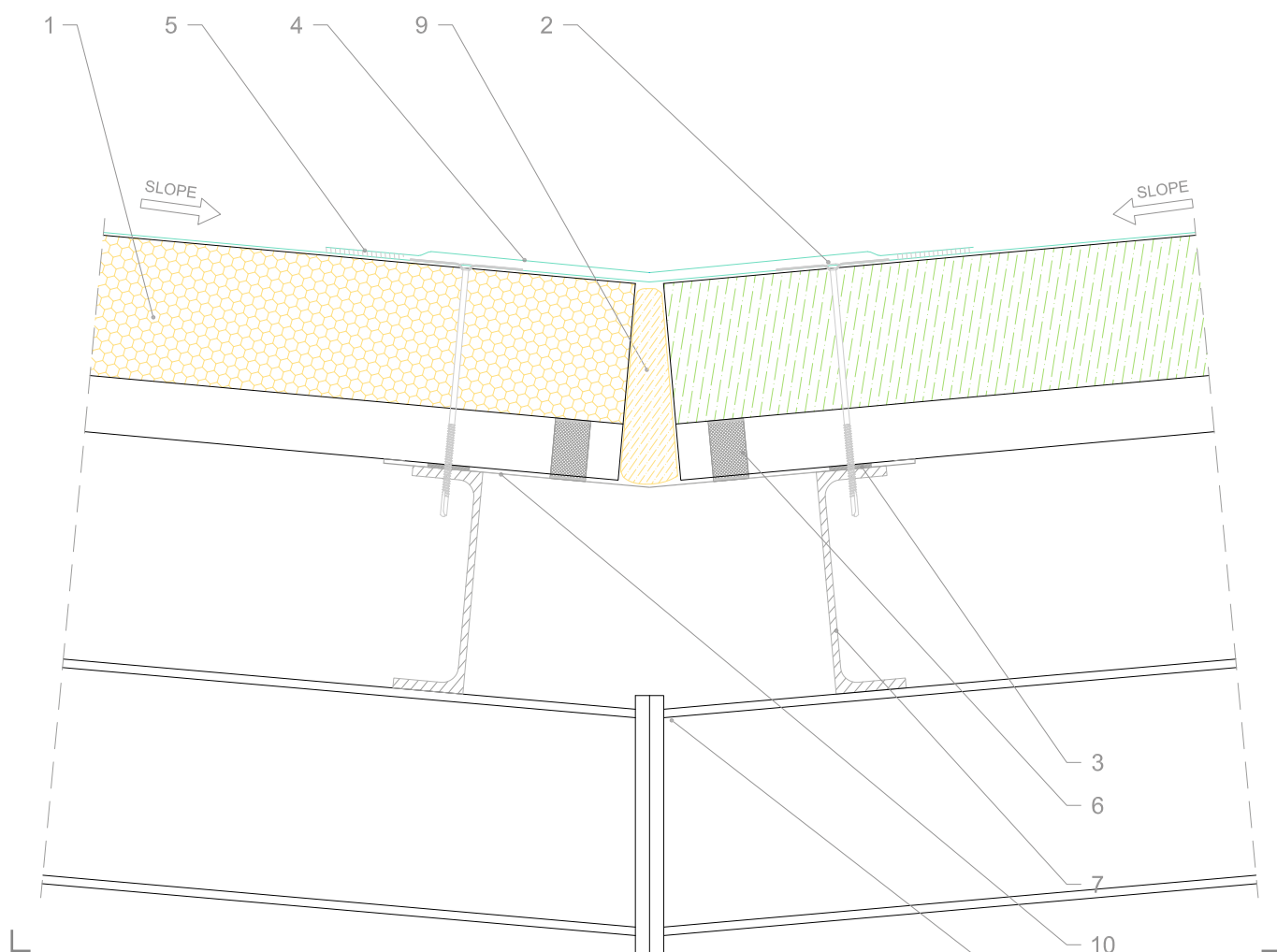


FR07

Ridge connection - Type 2



You can download the .dwg and .pdf files collection at isopan.com.



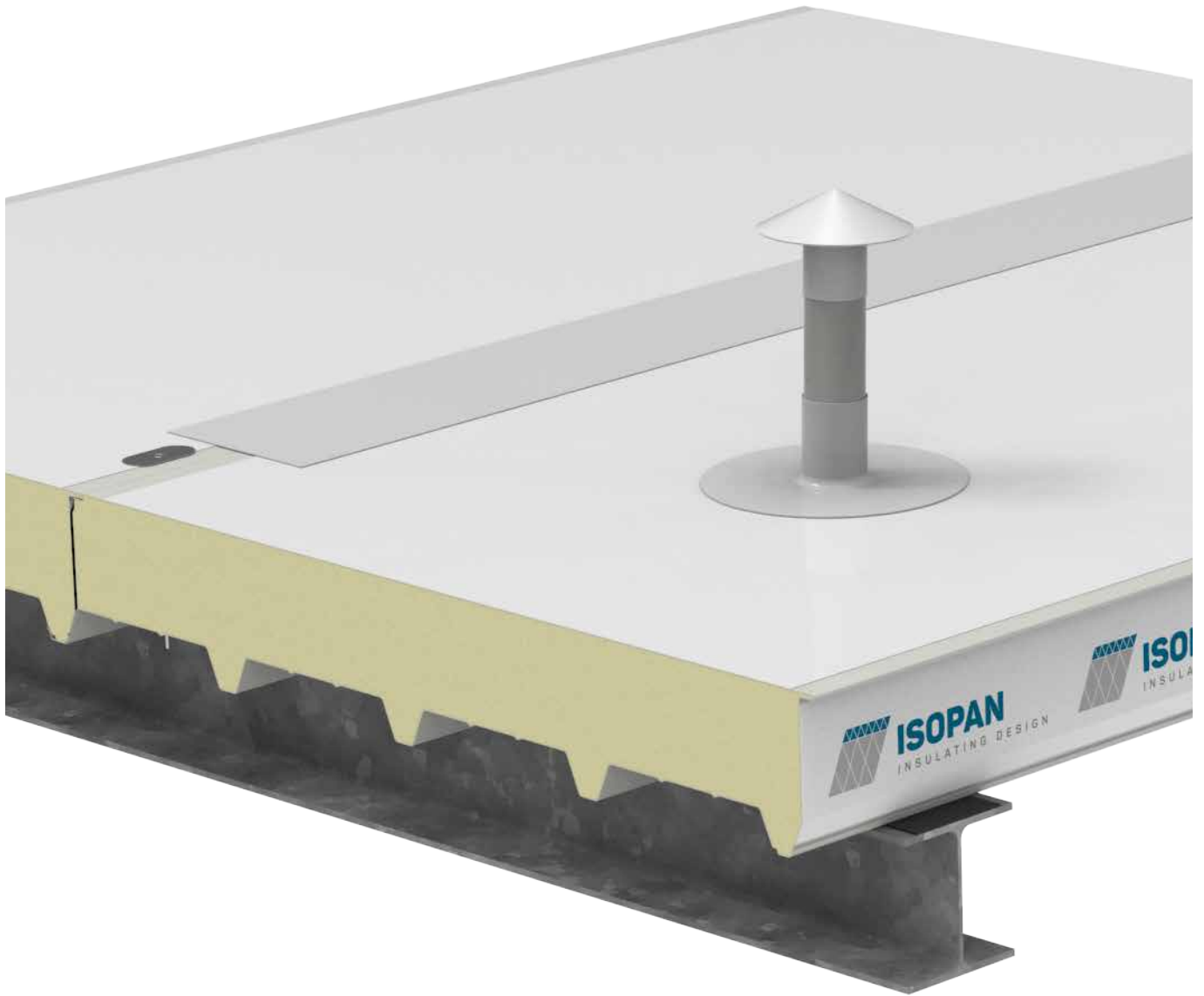
LEGEND

1. Isopan Flat Roof sandwich panel
2. Fixing system (screw with metal or plastic cap)
3. Thermo separating tape
4. Pontage synthetic layer
5. Air welding
6. Giuntoplast Gasket
7. Primary structure
8. Secondary structure
9. On site insulating material / Mineral wool
10. Pre-painted sheet

ATTENTION: the proposed solution does not constitute the project, and must be firstly assessed and evaluated by the designer and construction supervision. The designer is responsible for assessing the need to insert additional gasket and/or closing elements, even when not indicated in the drawing details. The property rights of this document belong to ISOPAN S.p.a. The contents can't be reproduced without prior written permission by the author. To choose the type of fastening, please refer to the screw type choice sheet; To choose the screw length, please refer to the data sheet for the correct screw length).

FR08

Chimney Outlet

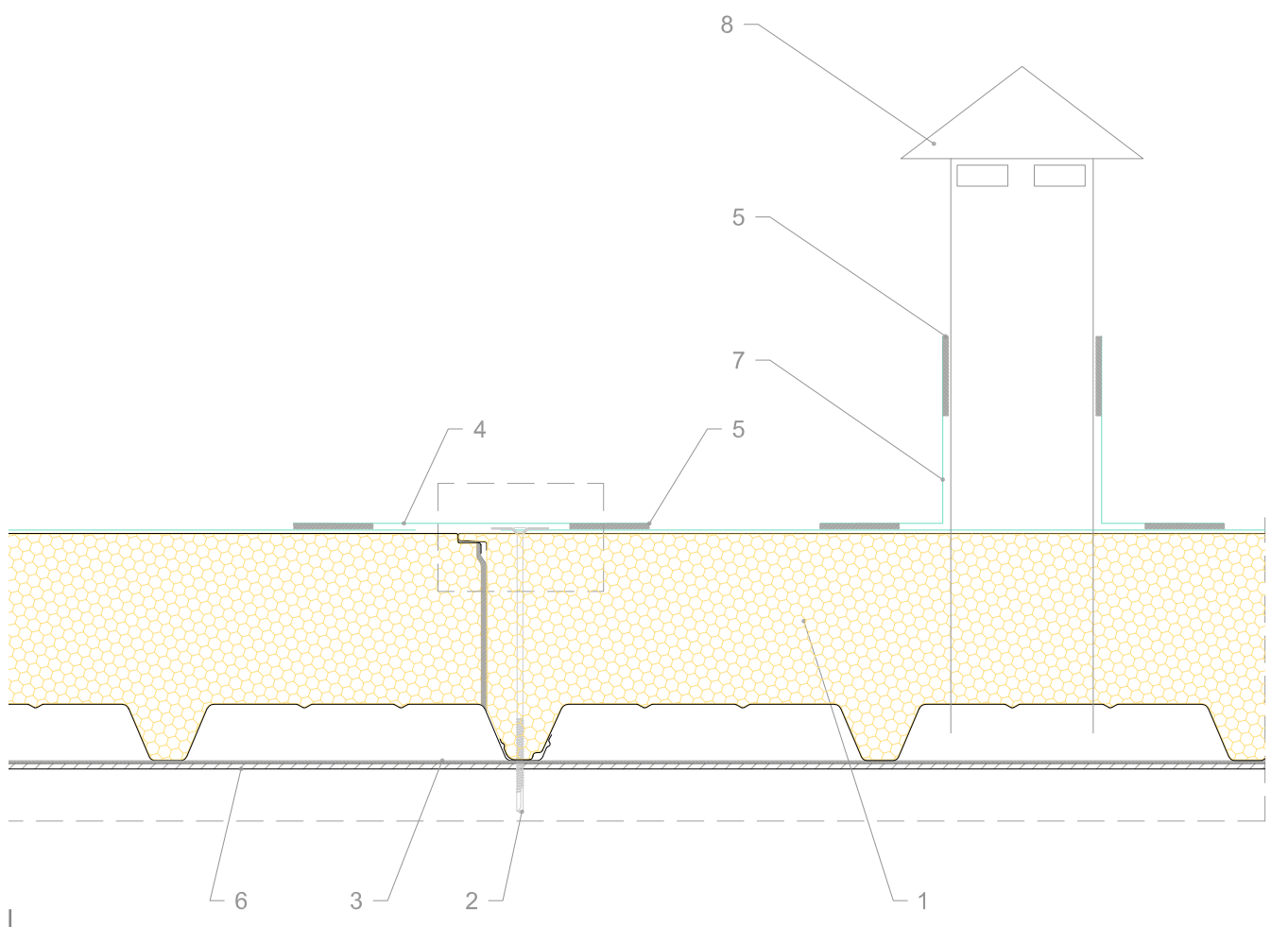


FR08

Chimney Outlet



You can download the .dwg and .pdf files collection at isopan.com.



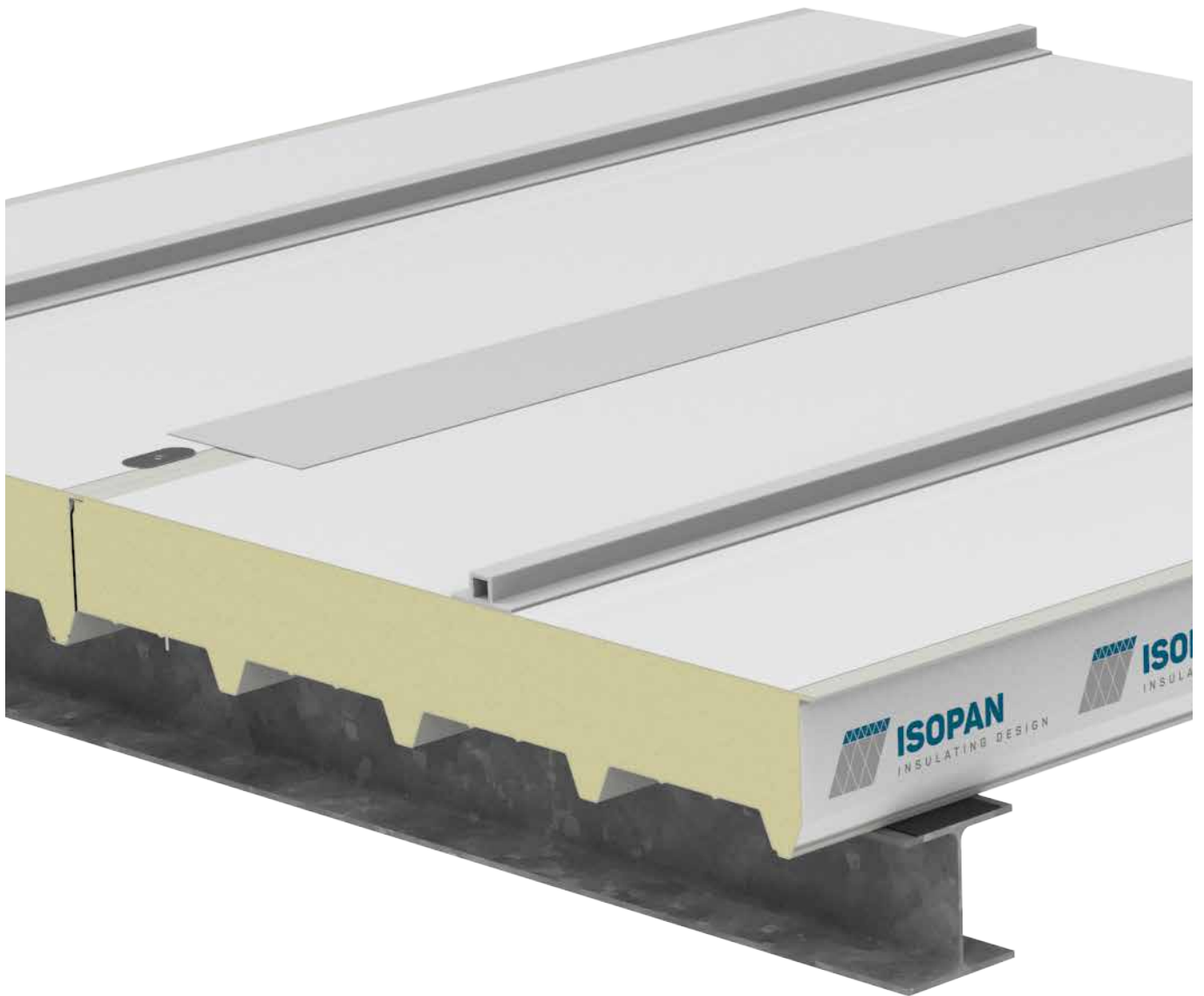
LEGEND

1. Isopan Flat Roof sandwich panel
2. Fixing system (screw with metal or plastic cap)
3. Thermo separating tape
4. Pontage synthetic layer
5. Air welding
6. Secondary structure
7. Synthetic membrane for chimney outlet waterproofing
8. Chimney outlet

ATTENTION: the proposed solution does not constitute the project, and must be firstly assessed and evaluated by the designer and construction supervision. The designer is responsible for assessing the need to insert additional gasket and/or closing elements, even when not indicated in the drawing details. The property rights of this document belong to ISOPAN S.p.a. The contents can't be reproduced without prior written permission by the author. To choose the type of fastening, please refer to the screw type choice sheet; To choose the screw length, please refer to the data sheet for the correct screw length).

FR09

Isobar installation

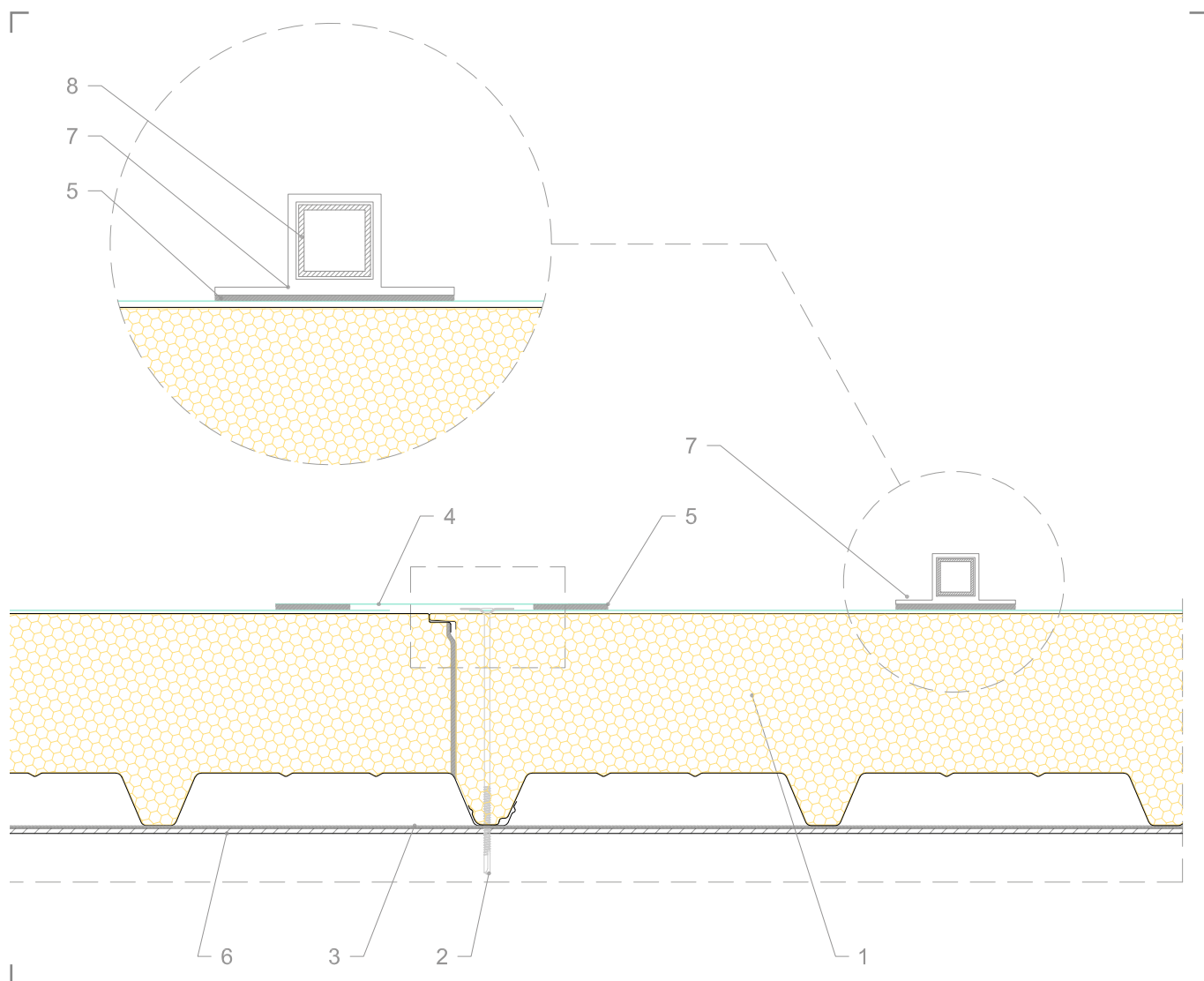


FR09

Isobar installation



You can download the .dwg and .pdf files collection at isopan.com.



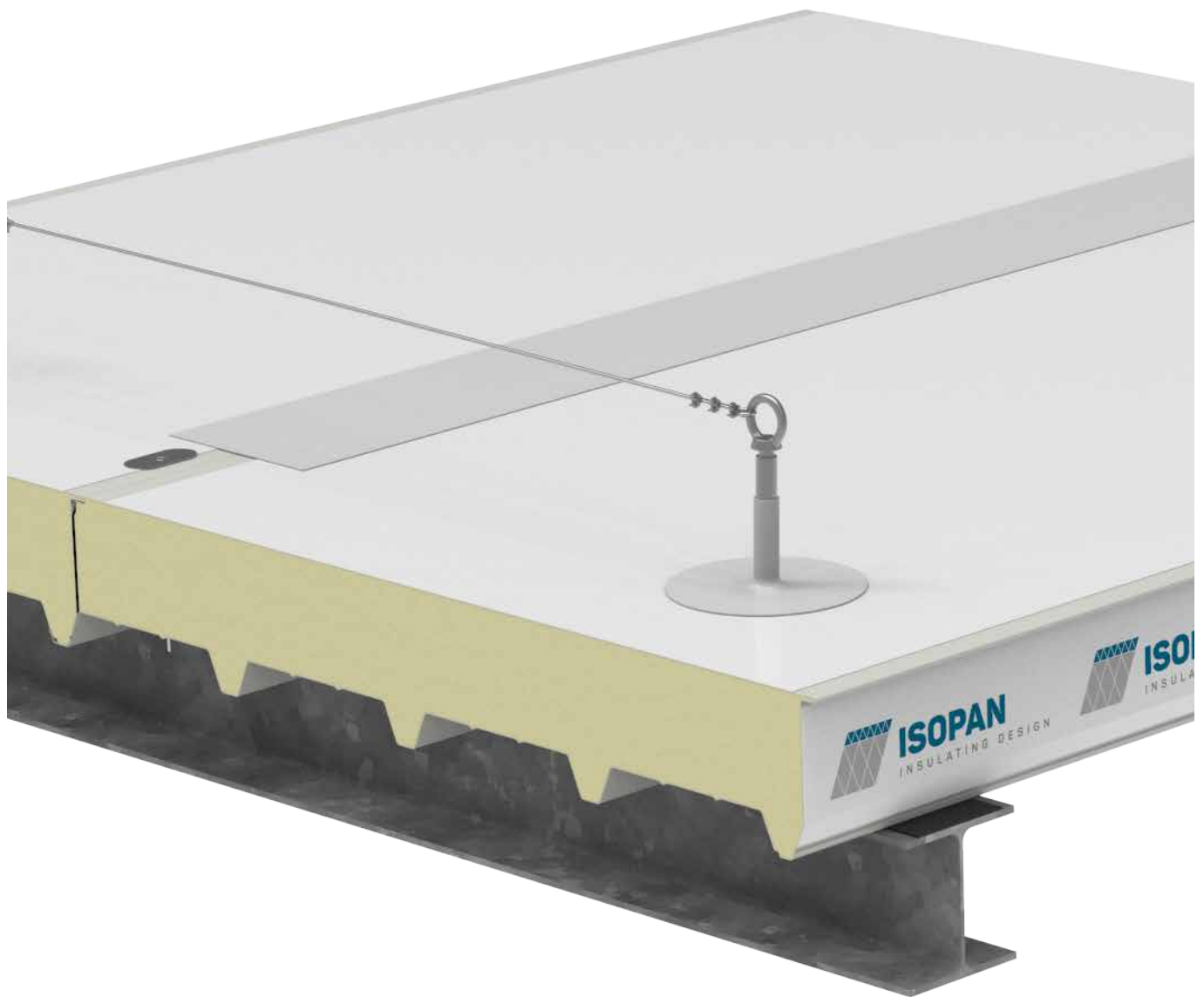
LEGEND

1. Isopan Flat Roof sandwich panel
2. Fixing system (screw with metal or plastic cap)
3. Thermo separating tape
4. Pontage synthetic layer
5. Air welding
6. Secondary structure
7. ISOBAR made by Synthetic cover and aluminium internal profile, for Photovoltaics systems installation
8. Internal Aluminium profile

ATTENTION: the proposed solution does not constitute the project, and must be firstly assessed and evaluated by the designer and construction supervision. The designer is responsible for assessing the need to insert additional gasket and/or closing elements, even when not indicated in the drawing details. The property rights of this document belong to ISOPAN S.p.a. The contents can't be reproduced without prior written permission by the author. To choose the type of fastening, please refer to the screw type choice sheet; To choose the screw length, please refer to the data sheet for the correct screw length).

FR10

Fall Arrest systems

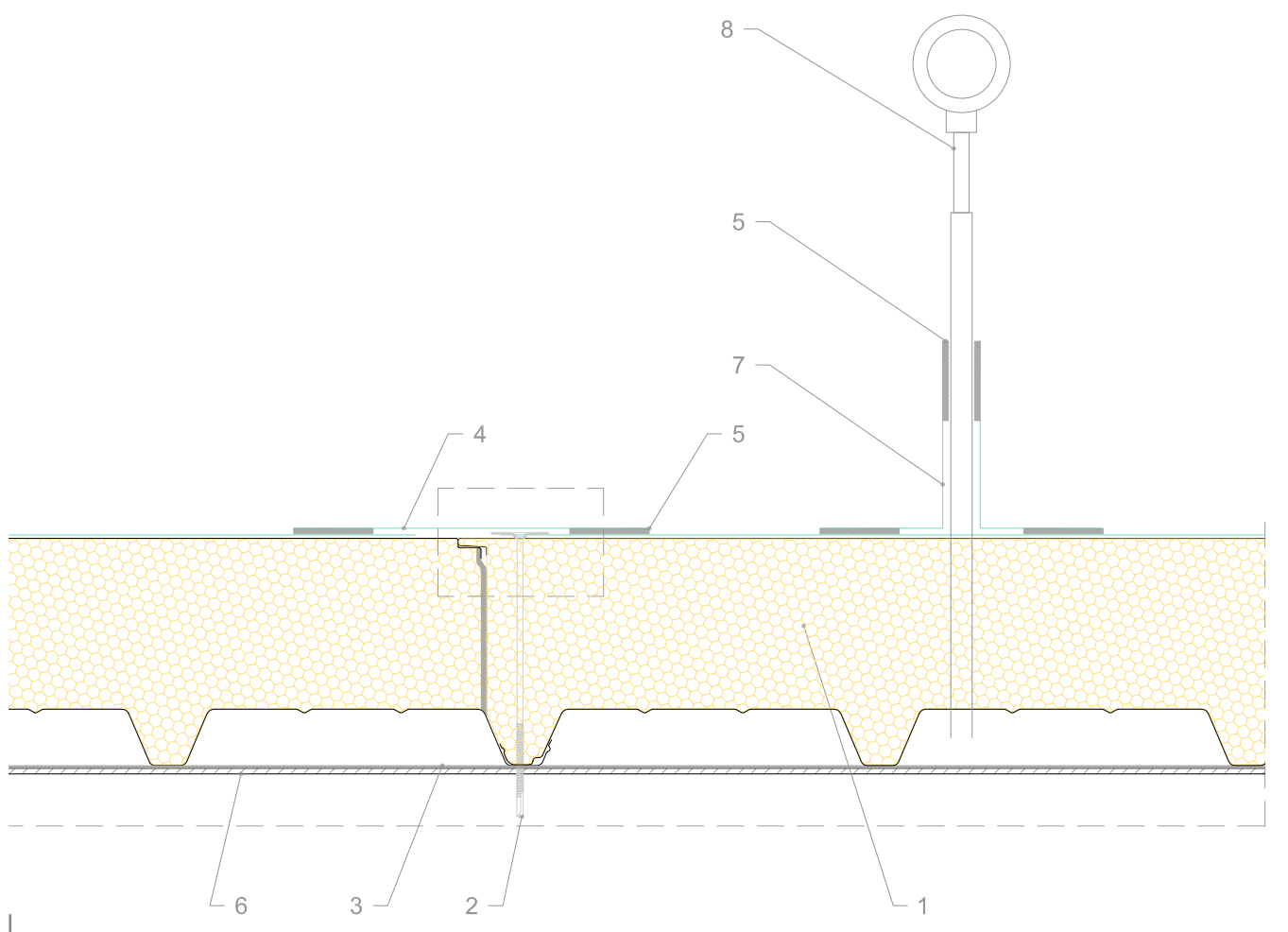


FR10

Fall Arrest systems



You can download the .dwg and .pdf files collection at isopan.com.



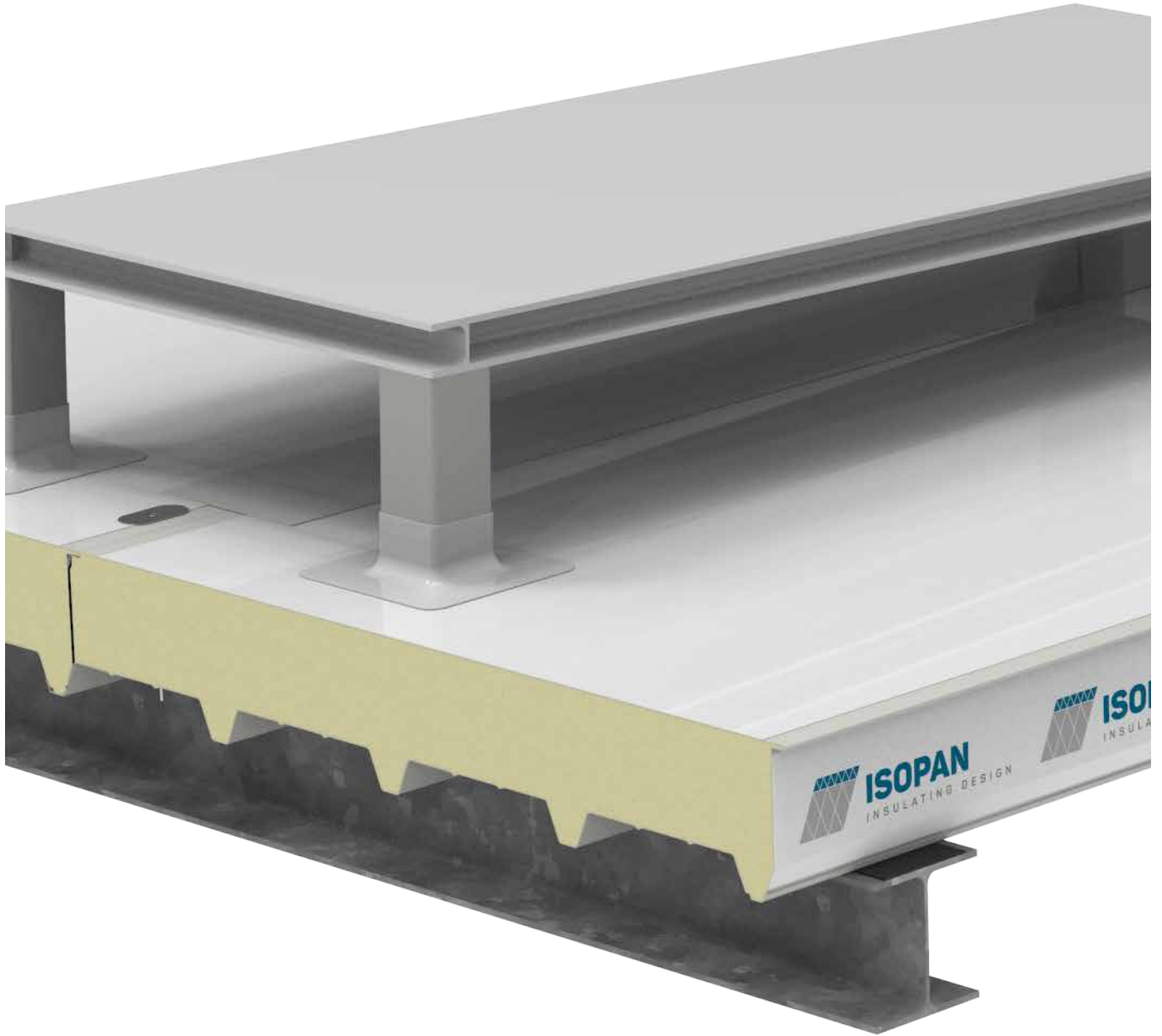
LEGEND

1. Isopan Flat Roof sandwich panel
2. Fixing system (screw with metal or plastic cap)
3. Thermo separating tape
4. Pontage synthetic layer
5. Air welding
6. Secondary structure
7. Synthetic membrane for Fall Arrest device
8. Fall Arrest Device

ATTENTION: the proposed solution does not constitute the project, and must be firstly assessed and evaluated by the designer and construction supervision. The designer is responsible for assessing the need to insert additional gasket and/or closing elements, even when not indicated in the drawing details. The property rights of this document belong to ISOPAN S.p.a. The contents can't be reproduced without prior written permission by the author. To choose the type of fastening, please refer to the screw type choice sheet; To choose the screw length, please refer to the data sheet for the correct screw length).

FR11

Outlet for through structure

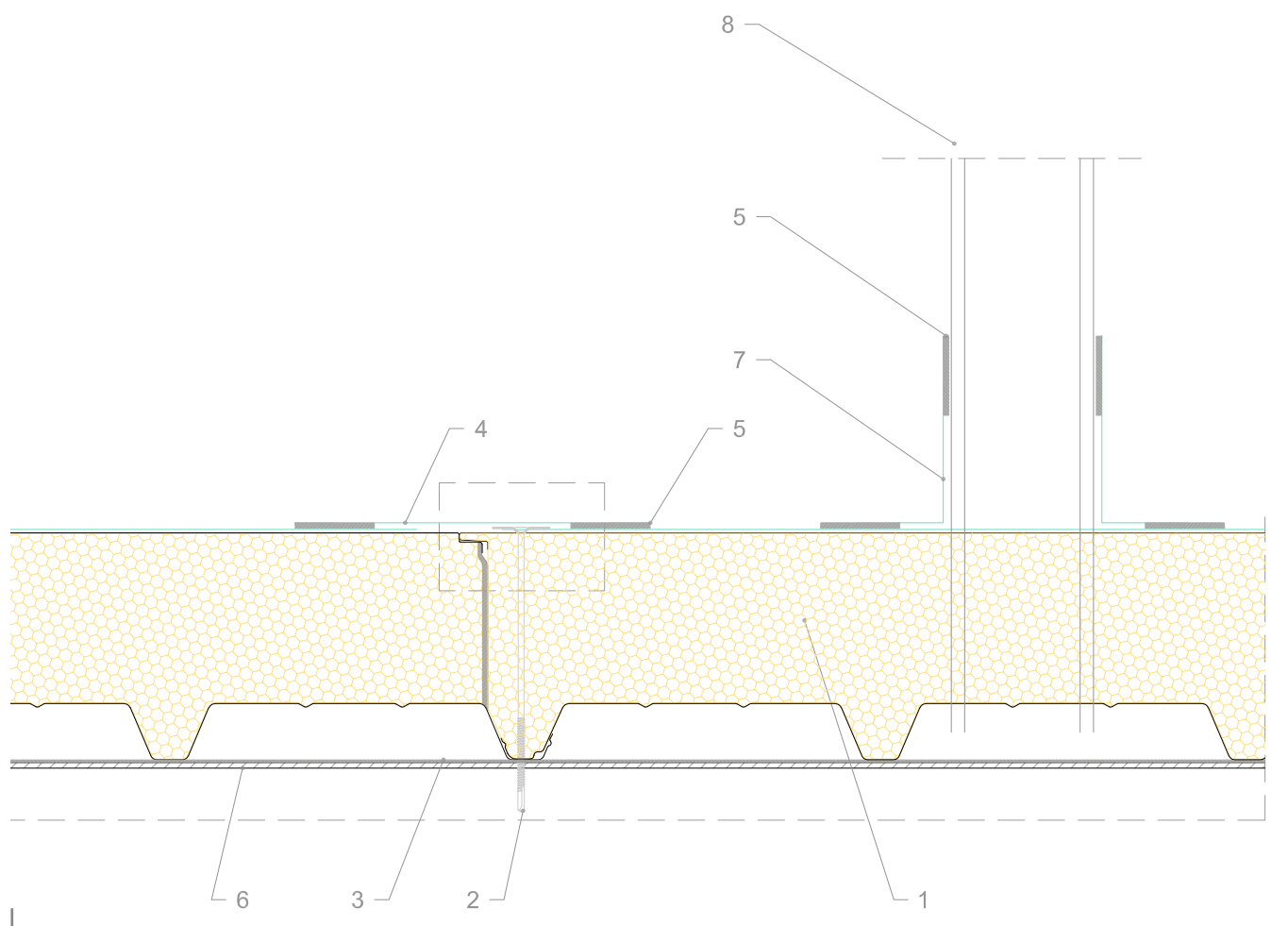


FR11

Outlet for through structure



You can download the .dwg and .pdf files collection at isopan.com.



LEGEND

1. Isopan Flat Roof sandwich panel
2. Fixing system (screw with metal or plastic cap)
3. Thermo separating tape
4. Pontage synthetic layer
5. Air welding
6. Secondary structure
7. Synthetic membrane for waterproofing
8. Through structure

ATTENTION: the proposed solution does not constitute the project, and must be firstly assessed and evaluated by the designer and construction supervision. The designer is responsible for assessing the need to insert additional gasket and/or closing elements, even when not indicated in the drawing details. The property rights of this document belong to ISOPAN S.p.a. The contents can't be reproduced without prior written permission by the author. To choose the type of fastening, please refer to the screw type choice sheet; To choose the screw length, please refer to the data sheet for the correct screw length).

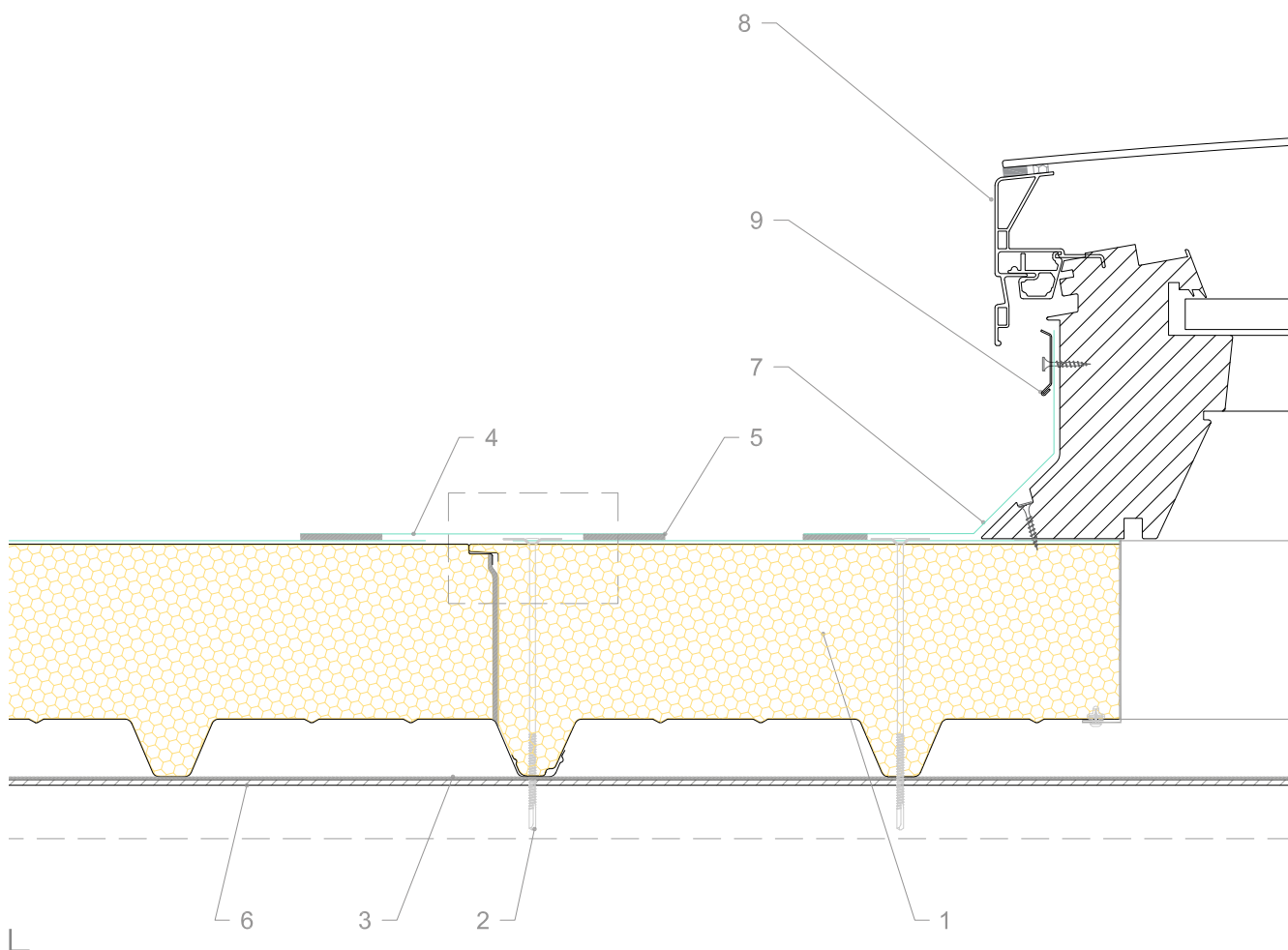


FR12

Outlet for HVAC



You can download the .dwg and .pdf files collection at isopan.com.



LEGEND

1. Isopan Flat Roof sandwich panel
2. Fixing system (screw with metal or plastic cap)
3. Thermo separating tape
4. Pontage synthetic layer
5. Air welding
6. Secondary structure
7. Synthetic membrane for chimney outlet waterproofing
8. HVAC outlet / Window for flat roof
9. Metal flashing

ATTENTION: the proposed solution does not constitute the project, and must be firstly assessed and evaluated by the designer and construction supervision. The designer is responsible for assessing the need to insert additional gasket and/or closing elements, even when not indicated in the drawing details. The property rights of this document belong to ISOPAN S.p.a. The contents can't be reproduced without prior written permission by the author. To choose the type of fastening, please refer to the screw type choice sheet; To choose the screw length, please refer to the data sheet for the correct screw length).

FR13

Open gutter

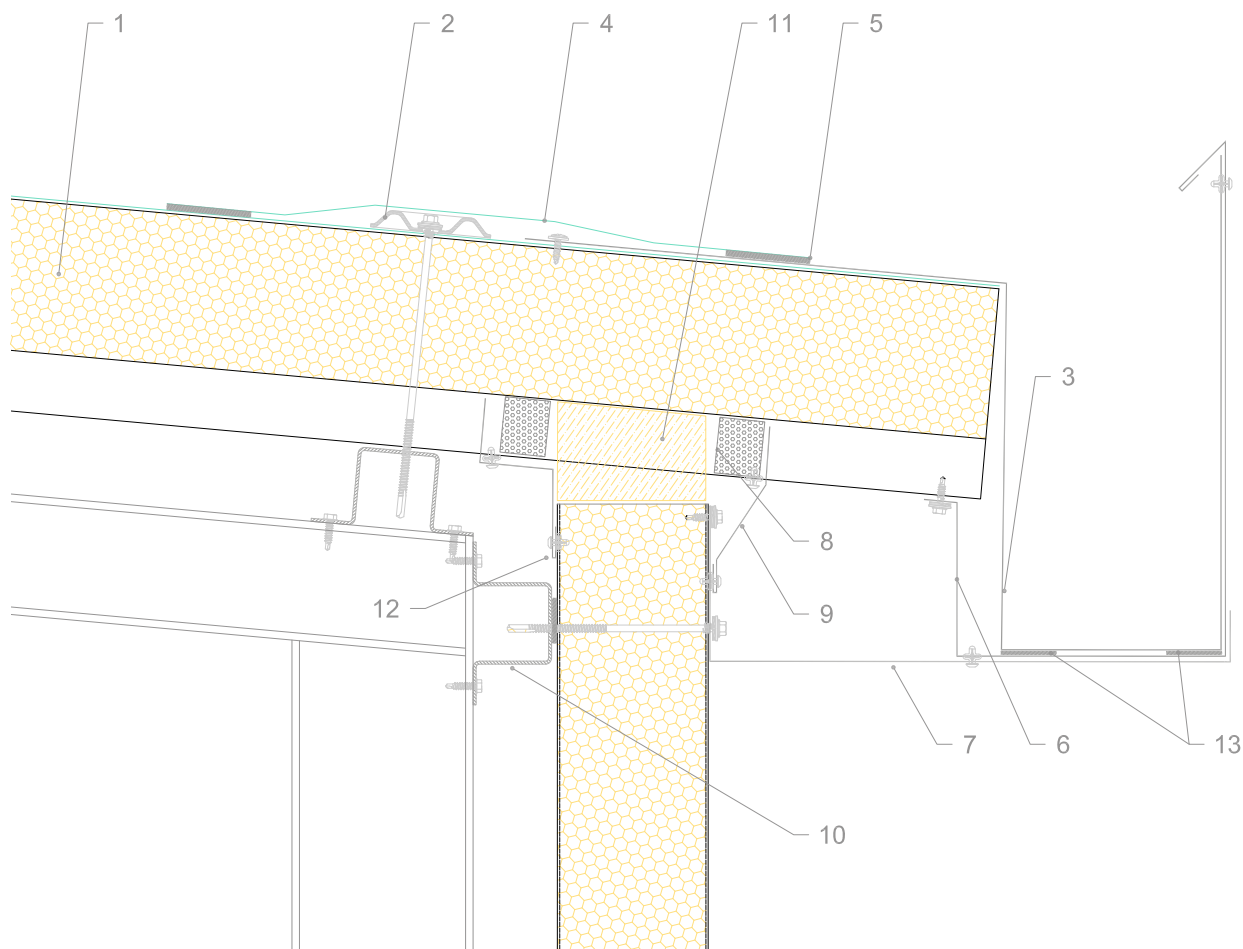


FR13

Open gutter



You can download the .dwg and .pdf files collection at isopan.com.



LEGEND

- | | |
|--|------------------------|
| 1. Isopan Flat Roof sandwich panel | 11. On site insulation |
| 2. Fixing system (screw with metal or plastic cap) | 12. Metal flashing |
| 3. Gutter channel made with PVSTEEL Flashing | 13. Gasket |
| 4. Pontage synthetic layer | |
| 5. Air welding | |
| 6. Metal Flashing with PVC/TPO layer, for Gutter Channel support | |
| 7. Metal support for gutter channel | |
| 8. Giuntoplast gasket | |
| 9. Metal flashing | |
| 10. Secondary structure | |

ATTENTION: the proposed solution does not constitute the project, and must be firstly assessed and evaluated by the designer and construction supervision. The designer is responsible for assessing the need to insert additional gasket and/or closing elements, even when not indicated in the drawing details. The property rights of this document belong to ISOPAN S.p.a. The contents can't be reproduced without prior written permission by the author. To choose the type of fastening, please refer to the screw type choice sheet; To choose the screw length, please refer to the data sheet for the correct screw length).



ISOPAN

BUILDING ENVELOPE SOLUTIONS
by Manni Group

www.isopan.com



ITALY

Registered and Administrative HQ
Verona | Italy

Isopan Spa
Verona | Italy
Frosinone | Italy

WORLD

ISOPAN IBERICA
Tarragona | Spain

ISOPAN EST
Bucharest | Romania

ISOPAN DEUTSCHLAND
Halle (Saale) | Germany

ISOPAN RUS
Volgograd | Russia

ISOCINDU
Silao | Mexico

SALES COMPANIES

ISOPAN FRANCE
Paris | France

ISOPAN MANNI GROUP CZ
Praha | Czech Republic